



# **2021/22**

# **FULL TIME**

# **COURSE**

# **GUIDE**

#WhereLearningComesToLife



[yeovil.ac.uk](https://www.yeovil.ac.uk)

# CONTENTS

Principal's Welcome	3
Why Choose Yeovil College?	4-5
YC Edge & Enrichment	6-9
Campus Investment	10-11
Open House Information Evenings	12
First Steps on your Career Journey	13
Secure your Dream Career	14
Study Options	15
Course Levels Explained	16
Get Involved	17
Excellent Facilities	18-20
Online Application	21
Student Life	22-23
Sports Academy	24-25
Careers Hub	26-27
Wifi Enabled Campus	28
A Levels	29-38
Vocational Qualifications	39-68
Apprenticeships	69-74
T Levels	75-79
English and Maths	80
ESOL	81
Yeovil College University Centre	82-83
Course Index	84-85
Financial Information	86
Personal Support/Direct Bus Travel	87
Campus Map	88
Application Form	89-90
Location	91

# CONTACT DETAILS

 01935 423921

 @YeovilCollege

 [www.yeovil.ac.uk](http://www.yeovil.ac.uk)

 @YeovilUniCentre

 [enrol@yeovil.ac.uk](mailto:enrol@yeovil.ac.uk)

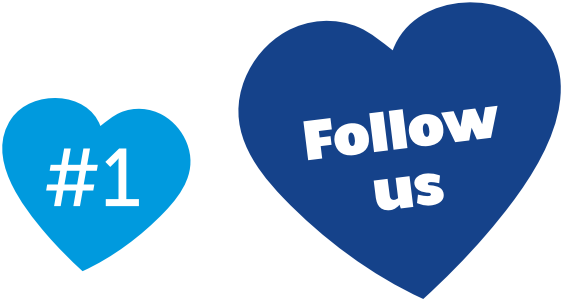
 @YC\_Apprentices

 @yeovilcollege


 @yccareershub


 YeovilCollege


 YeovilCollege





## INFORMATION EVENINGS


 TUES  
6  
OCT  
Virtual

 OPEN  
HOUSE MONTH  
7 OCT -  
NOV 4  
Virtual

 TUES  
19  
JAN

 TUES  
23  
FEB  
Apprenticeship Job Fair

 WED  
24  
MAR

 MON  
14  
JUN

# PRINCIPAL'S WELCOME



A very warm welcome to Yeovil College and thank you for taking the time to find out more about our amazing college. Deciding upon your next destination is both an exciting and important decision as it should provide the springboard for your future career, and I hope that you will decide that our wonderful college can help you achieve your ambitions.

Our campus is an open, safe, welcoming and an extremely supportive space. We provide learners with the encouragement and confidence to develop and succeed at a pace which is appropriate to each individual. We are supportive rather than prescriptive, enabling students to develop to be the best they can, with the help they need, when they need it.

We are a vibrant college community where our number one priority is to maximise the potential of each and every one of our learners, providing them with the right skills, knowledge and behaviours to support them during their career journeys. You will discover that Yeovil College is a positive, aspirational and inclusive place to learn and grow, making it a brilliant starting point for our students.

Once here, you will have opportunity to progress with us, whether that is onto an apprenticeship, to our University Centre or to enhance your skills with a further programme of study. Whether your career commences in six months or six years from your starting point with us, we believe we should provide you with a clear line of sight to your career and accelerate you towards it.

You will benefit from expert tutors, first-class facilities, an environment which is undergoing significant investment and transformation and real work experience opportunities. We are placed as the top performing college in Somerset for all 16-18 year olds, measured by the key indicator, achievement rates, for the second consecutive year. This means that your future is secure no matter which level or programme you study with us.

This is an exciting time to be a student looking at their future and I look forward to helping you make the right decision to support a positive career.



**Mark Bolton**  
CEO & Principal of Yeovil College

# WHY CHOOSE YEOVIL COLLEGE?

- 1 Ranked the number one college in Somerset for 16-18 year old achievement, for the second year (DfE March 2020).
- 2 Relentless ambition and high expectations for our learners to be the very best they can.
- 3 Massive investment to transform the digital infrastructure of our campus; in excess of £2.4 million.
- 4 Ambitious campus £10m development and improvement agenda across all curriculum.
- 5 Impressive and unrivalled links with our employer community.
- 6 An unrivalled learner experience with a clear line of sight to careers, which is supported by the business community around us.
- 7 Our teachers are the best, professional, industry-experienced experts in the area.
- 8 We are a caring, passionate and energetic group of people, and our students make us this way.
- 9 A Level achievement and university progression are strong.
- 10 'YC EDGE', get ahead' differentiates us and provides students with an enriched experience.



"I joined Yeovil College in September 2019 looking to study Health and Social care, I was placed on the Level 2 course as the college and I agreed that this was best for me. I didn't really have an idea with where I wanted to go with my career and in ten months the college has supported me with that decision and I now have ideas and ambitions. I absolutely love college and I couldn't recommend it enough, it's an amazing opportunity and opens you up to paths you may not have thought about. The work was easier with the support of an amazing tutor and supportive staff. I have always appreciated teachers and staff but at Yeovil College you develop a professional relationship with the staff there as you become an adult. The opportunities you get amaze me, I've spoken to people on the receiving end of healthcare as well as individuals that provide Health and Social Care. We had an amazing opportunity whilst learning about equality and diversity to visit a Mosque which was brilliant. The college are always keeping in touch with you during this home learning. They are now supporting me to make my decision for the next academic year as I'm looking for an apprenticeship, however I have applied for Health and Social Care Level 3 and I would be extremely happy to spend the next two years at Yeovil College."

**Chloe Higgins – Level 2 Health & Social Care student at Yeovil College, formerly of Westfield Academy.**



"Yeovil College has been so supportive of my entire journey and my results have exceeded my expectations. I am so excited to go to university and to ultimately become a midwife."

**Charlotte Corden** – A Level Biology (B), Sociology (A), Psychology (A) and EPQ (A\*) at Yeovil College, formerly of Bucklers Mead Academy



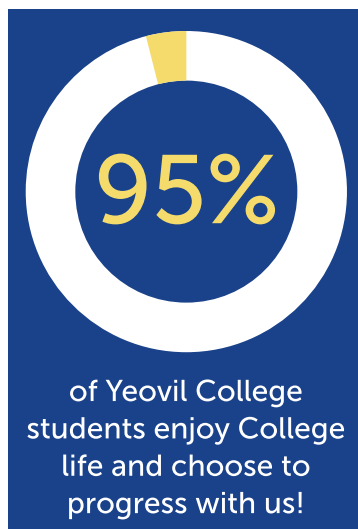
"I decided to do an Apprenticeship because I wanted to learn and become qualified whilst still getting paid. Having an employer is class! You get to meet new people and get money. I would recommend Apprenticeships because it is the best way to get qualifications as well as earning."

**Charlie Berrington** – Level 2 Apprenticeship in Property Maintenance with Yarlinton Housing Group, formerly of Wadham School.



"My favourite part of being a Yeovil College Apprentice was going to masterclasses and seeing Marie Evans and Suzanne Uren. Having an employer like Honeywell is ideal as it's a large company which offers a lot of opportunities. I would recommend Apprenticeships to other people because it gives you the chance to learn a range of different skills in the working world."

**Andre Anjos** – Yeovil College Level 3 Business Administration Apprentice, (D,D,D) employed by Honeywell.



**WE HAVE THE HIGHEST ACHIEVEMENT RATES FOR 16-18 YEAR OLD STUDENTS IN THE WHOLE OF SOMERSET!**

\*Figures from National Achievement Rates Tables, published March 2020



"My favourite part of being a Yeovil College Apprentice was building a professional relationship with my teacher. This made completing the apprenticeship a lot easier as I felt I could contact her at any time, and she would be willing to help."

**Taylor Mowlem** – Yeovil College Level 3 Business Administration Apprentice employed by Sycamore Process Engineering, formerly of Gillingham School.



# YC Edge



## **GET AHEAD**

### **EXPECT MORE! ACHIEVE MORE!**

Aspiration, expectation and entitlement is our mantra and is the guiding principle in setting out the 'Yeovil Edge' concept. Yeovil Edge is bespoke to Yeovil College and it has been designed to enable students to get ahead and differentiate themselves within a crowded market-place. YC Edge encompasses enrichment activities that develop high aspirations, confidence, resilience and encouraging a healthy lifestyle and supports students to become well-rounded members of society, confident to progress into their intended career or university destination. Through Edge we support our students to develop the underpinning knowledge and self-worth needed to be successful in work and life, whilst developing the mind-set of 'to expect more, is to achieve more'.

#### **Stretching Ambition**

We firmly believe that to expect more is to achieve more, and through Yeovil Edge we will set extremely high expectations, working with parents or guardians to ensure that projections can also be supported and understood within the home environment. We keep parents informed throughout the year with regular updates, reports and parents' evenings designed to discuss progress, support and next steps. There is no limit to your success – we want every single Yeovil College student to fulfil their potential whilst they are with us, and beyond. We accept that sometimes this may feel hard, often even uncomfortable, but we will not compromise on expecting the very best for our students.

#### **Achieving More**

We challenge our students to be the best they can be. At Yeovil College, students will be encouraged to maximise their potential no matter where their career journey begins. It is the right of every student at Yeovil College to demand both challenge and enrichment, which is why we have an ambitious Elevate programme for talented A Level students and a far-reaching sports and enrichment programme for every student. You will leave Yeovil College rich in skills and knowledge.

#### **Feeling Valued**

Engendering a sense of value and pride is a huge part of the Yeovil College culture. You will soon realise that you are valued as an individual person and will never be just a number to us. This is what sets us apart. From transition into college, through to progression onto the next stage of your career journey, whether this is to university, an apprenticeship, to further study or into employment, you will be supported, guided, encouraged and celebrated.

## Maximising Potential

Right from the start of your Yeovil College journey, you will be encouraged to think big and dream even bigger. Yeovil College has claimed the top position in South Somerset for the second consecutive year. We are the number one college for the achievement of 16-18 year olds, as declared by the DfE League tables in March 2020 and puts us firmly within the top 10% of the country, and above any other local college. This means that not only are we confident that our students will thrive at Yeovil College, but will exceed all ambitions. You can study at Yeovil College in the absolute certainty that you have picked a college with the right blend of support, enrichment and challenge, who will encourage and cheer you on during every part of your college journey.



## Community Spirited

We have worked hard to ensure that our students develop into well-rounded and educated young people with a real sense of understanding about the worth and value of their community. We have developed several opportunities around the Duke of Edinburgh Award and social action projects, allowing students to interact with a huge variety of groups and networks. They will develop social skills, problem-solving abilities and improved communications, helping to support their time at Yeovil College and the next steps of their career journey.



## Future Ready

When stripped back, our job is a simple one; we will prepare our students for the next steps of their career. We only have a short time to influence, educate and instil a sense of purpose and drive within our students, so be assured that we will maximise this opportunity. Yeovil Edge will help you get ahead of the competition, present you with many opportunities to become involved and position you in a positive place for a successful future of your choosing.



# YEOVIL EDGE: ENRICHMENT AND SPORTS

We have designed an extensive enrichment and sports offer which sits firmly within the Yeovil Edge offer. The menu of activities has been aligned to the interests of our students and is continually adjusted to meet the needs of our community. Activities will not only boost confidence and expose our students to a wide variety of interesting, challenging and new skills, but will also encourage students to develop a wide and interesting network of friends.

Our enrichment and sports programme is divided into five key strands:

## Strand 1 - Academic

Activities that prepare and support our learners to secure their intended destination upon completing their study at Yeovil College, including redbrick universities, Oxford and Cambridge. Students will experience a research-based extended project (EPQ), a series of university guest speakers, masterclasses, aspirational university trips and conferences and mock interviews replicating the relevant application process and UCAS support.

We offer clubs and societies in:

- Elevate
- Get ahead with UCAS
- UCAS Convention
- World of Work Talks (WOW)
- Debating Society
- Volunteering programme to support local school children, interviewing skills and job seeking skills.

## Strand 2 - Sport

The opportunity to compete at the highest level nationally and internationally provides our strongest sports performers with the ability to meet their aspiration of being the best. The highest level of coaching is provided to our most popular sports of badminton, football, netball, rugby, basketball and athletics. For learners competing at the highest level in a more minority sport, strength and conditioning support is offered to them.

We offer clubs in:

- Football
- Rugby
- Badminton
- Strength and Conditioning
- Gym
- Cricket
- Rounders
- Tennis
- Athletics
- Disability Sport
- Hockey
- Netball
- Fencing (NEW)
- Horse Riding (NEW)
- Sailing (NEW)
- Shooting (NEW)

## Strand 3 - Artistic and Cultural

Artistic and cultural activities allow students to engage with, showcase and celebrate areas of local and national interest as well as forming clubs appealing to more creative learners.

We offer clubs in:

- Digital Media Group
- College Book Club
- College Reading Challenge
- Learning Resource Centre Literary Group
- College Creative
- Writing Club
- Yeovil College Magazine.



## Strand 4 - Challenge

Challenge activities are exciting and stimulating, designed to help our learners to develop confidence, resilience, aspirations and health, including:

- Duke of Edinburgh's Award
- Ten Tors Jubilee
- World Skills
- College Volunteering Group
- College Sustainability Group
- Basic Car Maintenance.

## Strand 5 - Ambassador:

Ambassador roles provide learners with the opportunity to engage and contribute to the college community. Undertaking these roles on a formally established basis enables us to genuinely place students at the heart of everything we do, this includes:

- Student Voice
- Student Ambassador
- Governor Representative
- Student Union
- Charity Fundraising.

## Duke of Edinburgh's Award

It is widely accepted that participants in the Duke of Edinburgh's Awards are recognised for developing life-long skills, creating new experience and encouraging students to try new things:

- The ability to work independently
- The ability to work with others
- Analytical skills
- Problem-solving skills
- Communication skills
- Self-motivation
- Determination
- Commitment.

Employers recognise the benefits of the award and enjoy seeing it listed within a CV. The award enables students to differentiate themselves to the very highest level.



# A 21ST CENTURY CAMPUS ONLY THE BEST IS GOOD ENOUGH!

Yeovil College is one of only 12 'Institute of Technologies' (IoT) Centres in the country, and the only one locally in South Somerset and Dorset. This means that we have received a share of £190m of IoT funding to significantly reshape, redesign and develop our campus to create a hub of technological innovation, which is even more reflective of the industries in which our students choose to develop their careers. In addition to this, we have plans for a further £7.5 million of capital investment, forming a substantial investment and part of our campus redevelopment plan which will provide a facility to deliver the very best for South Somerset, North and West Dorset – only the best is good enough!

The next generation will be fully equipped to apply their skills increase productivity and position the region as the 'creators and makers' of the future.

The scale and size of the redevelopment is vast, and whilst the plans continue to grow and take a physical form, we will share innovations with our community and provide a flavour of what is to come.



## Digital infrastructure

With over £1m invested in our digital technologies during 2020, our campus is truly connected, particularly important as we adapt to learning and working more flexibly. State-of-the-art resources enable students and lecturers to collaborate in and out of classrooms and workshops to provide exciting opportunities to embed technology in learning. This is an important investment for our students, providing an environment which can deliver the knowledge and skills required for career success through the fourth industrial revolution currently shaping our lives.

## Social Space

Over the next two years, additional student and staff spaces which reflect the highest quality education or business environments will be created; where work, study and social spaces merge to provide 21st Century working environments to rival the very best available. Students will be able to work and collaborate in digital café spaces located throughout the campus; supervised by staff, enabling students to make the most of learning time in college and get ahead in inspirational environments.

## Student Hub

Plans to more than double the size of our Learning Resource Centre are being finalised in readiness for implementation in September 2022, creating a huge Student Hub where all of the support and resources needed to fulfil the potential in every learner, will be located. Industry placement and Employer Engagement teams, careers advisors, learning resource staff, enrichment coordinator and student welfare staff will all be located in the hub to deliver a new vibrant students hub where learners can get ahead.

## Workshops and Workspaces

- **Health, Science and Education Centre** is planned for September 2021 with over £1.2m initial investment and a further £1m for September 2022. Creating cutting edge laboratories, new clinical training suites, an early years education facility and an environmental science centre.
- **Aerospace and Advanced Manufacturing Academy** with a leading CAD suite, industry standard materials and research laboratory including, large scale 3D printing, wind tunnel, materials testing rigs, gas turbine and electronics laboratory.
- **Light Vehicle Technology Centre** planned for September 2022 delivering sustainable technology and advanced diagnostic training resources for the modern world.
- **Computing and Digital Industry Laboratories** to support new cyber security, software engineering and ESports programmes.
- **Digital design and Creative Laboratories** with new materials design and production capability, virtual and augmented reality creation and immersion booths. Industry standard motion graphic and media creation studios to deliver inspirational creative industries education and training.
- Planned for September 2023, there will be a significantly extended construction facility, brand new training kitchens, hair and beauty salons and business hub serving the professional business service sector creating the next generation of leaders in our business community.

# INFORMATION EVENINGS

The very best way for you to discover what is available at Yeovil College is to experience it for yourself. Join us at one of our Open House Information Evenings where you can meet our lecturers, explore our campus and find out about finance, loans, course content, travel and bursaries. You will receive quality advice to help inform your next steps. All questions will be answered and all enquiries can be explored with our subject specialist teachers. It may be that our information evenings are held physically on site, or as an alternative this year, they could be through our virtual and digital platforms, but either way, you will receive the same level of detail, support and guidance from our experienced team. We also encourage you to take a tour of our campus either in person or through our virtual campus tours, which have been created and narrated by our managers to give you an honest and open opportunity to view our curriculum areas, as well as taking a look at the campus via our 'eyes in the sky' footage.

## What happens at a Yeovil College Information Evening?

- Discover all the subjects available to study;
- Spend time talking to the course tutor;
- Meet the Curriculum Area Manager;
- Discover future career and apprenticeship opportunities;
- Discuss student support, finances and your personal needs;
- Take a tour;
- Join a 'Pleased To Meet You' taster session;
- Complete your application form.

Both physical and virtual Open House information evenings will give you a huge amount of detail, as well as the opportunity to ask live questions. Whilst you may not be able to join an actual 'pleased to meet you' taster session, we have launched some exciting taster alternatives which we will be demonstrating throughout the year on social media and via our website.

<b>TUES</b> <b>6</b> <b>OCT</b> Virtual	<b>OPEN</b> <b>HOUSE MONTH</b> <b>7 OCT -</b> <b>NOV 4</b> Virtual	<b>TUES</b> <b>19</b> <b>JAN</b>	<b>TUES</b> <b>23</b> <b>FEB</b> Apprenticeship Job Fair
<b>WED</b> <b>24</b> <b>MAR</b>	<b>MON</b> <b>14</b> <b>JUN</b>	Register now to secure your place at our next Information Evening at <a href="http://www.yeovil.ac.uk/events">www.yeovil.ac.uk/events</a> whether that is physically or virtually.	



# FIRST STEPS ON YOUR CAREER JOURNEY



## HOW DO YOU GET STARTED?

### LET'S GO

The first step is the hardest but often the most important.

### VISIT US

- Information Evenings
- Apprenticeship Job Fair
- Drop-in sessions
- 'Pleased To Meet You' taster events
- Experience Days
- Website
- Social Media
- Campus tours
- 'Eyes in the sky' footage

### INTERVIEW

We'll help you decide the best course for you.

### APPLY

- Online
- By Post
- In Person



### YOUR CHOICE

We have a huge range of A Levels, T Levels, vocational courses, Apprenticeships and degrees.

### YOUR OFFER

You have been accepted to study at Yeovil College and we can't wait to meet you!

### NEW STUDENTS' DAY

This is the first time you'll meet new friends and all of your tutors.

### 1ST WEEK

It all begins here!  
Welcome to Yeovil College, you're officially a student!

### ENROLMENT DAY

It's time to enrol! You'll receive an email from us letting you know that it's time to formally enrol onto your course (usually August).

# SECURE YOUR DREAM CAREER

## Your Study Programme

Our aim at Yeovil College is to give you the skills, knowledge and work experience to allow you to follow your passion into the perfect career. Throughout your time with us, we'll work with you so that you're confident about your career pathway and we'll give you every opportunity to achieve your true potential. It is critical that you spend time researching the right study programme for you as this will influence your future career journey. Your decision will be influenced by your areas of interest, your career aspirations, your subject strengths and your skills. When you begin studying full-time at Yeovil College, you will be enrolled upon a study programme which will be made up of the following:

- **Your subject** - the subject area(s) you have chosen to study at Yeovil College.
- **English and Maths** - you will study English or Maths alongside your chosen subject if you have not achieved a grade 4 (formerly C grade) or above at GCSE. We will continue to support you to obtain the best grade possible.
- **Work experience / industry placement**  
You will complete a period of work experience, which can be up to 315 hours, providing you with consolidated time to implement your new skills and learning. Many students will be offered paid work placements, jobs and apprenticeships at the end of their placement periods via their placement employer.
- **Sport** - if you are a keen sports person, you will have the opportunity to play for team YC and compete at the very highest sporting level.
- **YC Edge & Enrichment** - you have the opportunity to join a number of excellent activities which have been developed to support our well-being, improve communication skills, develop confidence and learn new skills.
- **Extra activities** - this could involve your EPQ (Extended Project Qualification) if you are studying A Levels, identified supportive activities, clubs and groups, additional support and opportunities such as performing in our end-of-year show.

### Career focused study

During your time at Yeovil College you will be given many opportunities and experiences which will be focused specifically on helping you to secure your chosen career:

- Live briefs from employers;
- Industry placements and work experience;
- Careers Advice via #MyCareer;
- 'World of Work' employer talks;
- Masterclasses from experts;
- External trips and visits.

# STUDY OPTIONS

At Yeovil College, we plan everyone's education and learning around 'study programmes', which is a package of education suited to your career pathway. Your programme will include all education, enrichment and additional activities, which will ultimately provide you with your 'Yeovil Edge.'

## A Levels

Often considered a traditional route to university, your A Level programme will enable you to study subjects that you love in a much greater depth. We also offer subjects which you may not have previously studied, but are essential for your career journey. You will study your A Level programme over a period of two years and will be assessed via final examination, with some coursework.

## Vocational Qualifications

Our technical and vocational qualifications are a great option for students who are clear about their future career pathway. They provide a great route to university, as well as employment, an apprenticeship or further training. Assessment is through practical assessment and coursework, although exams may also feature. Vocational qualifications can be studied at different levels:

- **Level 3 qualifications** are valuable and recognised qualifications, equivalent to three A Levels. They are taught over a two year period at Yeovil College.
- **Level 2 qualifications** are one year programmes, designed to give students additional time to achieve their GCSE English and/or Maths. Students will naturally progress to a Level 3 qualification, into employment or onto a Apprenticeship.
- **Level 1/Year 1 qualifications** are designed to provide core skills which enable students to progress to the next, often more technical stage, in trades such as Construction and Engineering where high levels of work experience and practical exposure feature within the qualification. Students will use Level 1 qualifications as a basis for progression through the levels to achieve technical competency, or to an apprenticeship.

## T Levels (Technical Qualifications)

T Levels have been carefully tailored, with the support of employers, to enable students with a strong idea about their career pathways to achieve the skills they require. They are recognised by universities, providing students with the equivalent UCAS points to that of three A Levels. T Levels blend the academic study associated with A Levels, with the employability skills and experience of an apprenticeship. A T Level student will work for 80% of their time within the classroom and 20% in a work placement for two-years which is around 45 days, preparing them to step straight into university, paid employment or onto an apprenticeship programme.

## Apprenticeships

We have a huge Apprenticeship range and work with around 400 employers to offer apprenticeships at every level, including degree apprenticeships. They are usually a minimum of 12 months, mostly longer, and they allow students to work, earn a wage, develop employability skills and continue their education. Apprentices will work for 80% in the workplace and achieve 20% off-the-job training.

## Foundation Learning

Our Foundation Learning programmes are suited to those students who need additional support and time to help them progress to a full study programme, live independently or move into paid employment. Students will work towards the achievement of an externally accredited qualification, with many students progressing internally, onto a Level 1 Yeovil College qualification or onto our Supported Internship programme at Yeovil College.

# COURSE LEVELS EXPLAINED

At Yeovil College, we will work with you to ensure that you are offered a course appropriate to your abilities, skills and career aspirations. We start at entry level study programmes, through to level 7, which means we have a course and a progression route which is right for you, regardless of your previous grades and experience. Once you have completed your study programme, you can progress to the next level at Yeovil College or to our University Centre.

## Which level is best for me?

Your level is determined by the grades you achieve at GCSE. Sometimes, you will not be able to start at a higher level until you have mastered the core skills required at a lower level, this is essential in subject areas such as Construction and Engineering. If you do not achieve the grades you had expected, you will be able to start at a slightly lower level and progress through the levels to ultimately achieve your career aspirations.

## A Level entry requirements

You will need at least 5 GCSEs at grade 5 or above to study A Levels at Yeovil College, and you will also need to have a strong interest in the subject you have chosen. We will work with you to develop a strong study programme of complementary A Level subjects which will be valued by both universities and/or employers. Depending on which career route you want to follow after your A Levels at Yeovil College will determine some of your subject choices. It may also mean that you are required to hold a higher GCSE grade in a particular subject.

GCSE Grade	Number of GCSEs	Former GCSE Grades	Yeovil College Course Level
9, 8, 7, 6, 5, 4	5 GCSEs at grade 4 or above	A* - C	3
3, 2, 1	4 GCSEs at grade 3 or above	D - G	2
U	No qualifications/ limited practical experience	U	1 / Foundation

**When you successfully complete your Level 3 qualification with us, you will be guaranteed an interview for one of our degree-level qualifications within the Yeovil College University Centre.**



# GET INVOLVED

## Student Representatives

The opinion of our students is important to us. Being a Student Representative helps shape your communication, negotiation and problem-solving skills, as well as supports the development of your college.

## Student Voice

Let your voice be heard through our Student Voice meetings. Attend scheduled meetings with the Yeovil College Senior Management Team where you will represent the views of your peers and friends. You will help make your time at the college the best it can possibly be.

## Student Ambassador

A Student Ambassador is someone who is willing and motivated to get involved, have some fun and support Yeovil College at events. You will enjoy working with people as part of a team and be an excellent communicator.

## Student Governor

Get involved with and work with our senior people to influence and shape the strategic direction and performance of Yeovil College. This is a significant position within the college and will look amazing on your CV!

## Students' Union

YCSU organises gigs, parties, shopping trips and other social activities. Remember to grab your NUS Extra Card (Totum) to access discounts off many high street brands, food, entertainment and services. Be part of a huge and vibrant community.

## Charity Fundraising

YCSU is serious about fundraising, but like you, we want to have fun doing it! We run lots of events and collections to support our main charity which is selected by our students.



# EXCELLENT FACILITIES

Our college campus is changing. We are bidding for in excess of £10 million to help enhance our facilities, work spaces and social spaces at Yeovil College, of which £2.4 million has already been secured and will be in place. This is a true game changer for our students as we will start to introduce innovative technology across the college campus. Every curriculum area will benefit from this significant investment and the results will be breath-taking, turning a great campus into an outstanding campus.



**Nexus Hair and Beauty Salon**



This great facility is home to students studying Hairdressing, Beauty and Media Make-up. Students have the opportunity to work and practice in a commercial setting delivering professional treatments to clients. Our students deliver a range of luxurious pamper sessions including facials, electrolysis, waxing, manicures, pedicures and spray tanning through to blow-drys, hair extensions, re-styles and colour treatments, using only the best products and brands, including beauty giant ELEMIS.



**Da Vinci Restaurant**



Our award-winning, student-led commercial restaurant, Da Vinci, has undergone a huge expansion and refurbishment enabling students to work and learn in a high quality establishment. Serving breakfast, lunch, home-made cakes and coffees, and delivering regular themed evenings, the restaurant is the ideal space to develop front-of house skills, customer service experience and catering credibility.



**Performing Arts Studio**



Our Performing Arts Studio is a modern professional space, fitted with stage, sound and lighting, enabling students to deliver regularly planned shows from smaller singing performances through to full-scale, west-end musicals.



## Construction Centres



As one of the regions largest providers of construction education, and training, and one of the UKs highest performing construction centres, we have provided unrivalled, industry standard facilities for our Construction students, sponsored by Bradfords and Screwfix. We offer large workshops where students can hone their skills in an environment that replicates a real construction site.



## Engineering Centre @Leonardo



Our Engineering Centre is particularly special as it is home to a £10 million Leonardo Lynx Helicopter. We are also the only college in the country with an autoclave, making us the leaders for composites in the UK. We boast a 3D printer enabling our students to produce work for external businesses.



## Creative Industries @ Leonardo



Our Creative Centre for all art, design, media and digital arts students houses well-lit exhibition spaces and studios. This includes a Digital Photography Studio, Darkroom, TV, Film, Sound and Radio Studios, Digital 3D Fab Lab, Immersive VR Lab, Graphic Design Lab, Digital Media and Special Effects Lab, Printmaking, Fashion and Textiles Studio. The building transforms into an impressive gallery to showcase student work at the end of the year.



## Kingston Sixth Form Centre



Our Kingston Sixth Form Centre is an academically focused area where the environment replicates our ambition for our A Level students. We are known for maintaining a 100% A Level pass rate for all students, as well as achieving the highest A Level Value Added score in Somerset and Dorset. We also support our A Level students in their next steps, with many achieving places at Russell Group Universities, including Oxbridge universities.





## Motor Vehicle Centre



Our Motor Vehicle Centre boasts a light vehicle maintenance facility equipped with four vehicle ramps, MOT test lane with brake roller tester, diagnostic test equipment, air conditioning service unit, tyre fitting bay and hybrid/electric vehicle tooling as we look to the next generation of motor vehicle transport. The workshops frequently carry out small repairs and Pre MOT inspections on staff cars to help our students understand the skills and behaviours needed to work with customers in a modern repair facility.



## Learning Resource Centre (LRC)



The Learning Resource Centre is equipped with a comprehensive selection of current resources including books, ebooks, journals, online subscriptions, WiFi, devices to borrow, charging towers and some static PCs. Students are supported by knowledgeable and experienced staff who can help in finding resources and accessing the computer suite.



## Quiet Study Area (QSA)



The Quiet Study Area (QSA) offers a wide range of online resources and electronic books meticulously selected to support students working towards higher education and developing their personal study skills needed for university.



## Fitness Centre and Gym



The Fitness Centre and gym provides a full range of aerobic and resistance equipment including an extensive free weights area. Students can use the sports facilities to enhance their learning experience and take part in community sport. It is yours to use whenever you have free time and costs from just £15 per month.



# ONLINE APPLICATION

Research tells us that our most successful students make early positive decisions and that they have generally secured their place at Yeovil College by the Christmas period of their final year at school, if not before. Many students attending Yeovil College have already visited us a number of occasions to engage in a variety of taster sessions, whilst others take advantage of our unique 'pleased to meet you' taster sessions held throughout the year. Our students make informed decisions, understanding that their choices will give them the best opportunity to pursue their next steps on their career journey.

Applying for a course at Yeovil College is straight-forward. Once you have discovered your perfect study programme, simply go online at [www.yeovil.ac.uk](http://www.yeovil.ac.uk) to complete your quick and easy online application form. This will ensure that you start the process of securing your space at Yeovil College, which is particularly critical to some of our most popular and successful programmes. At this point there is still no commitment, and if required, you can change your mind at a later date, or even switch to an alternative study programme or apprenticeship at Yeovil College.

If you are unsure what to do, can't find the course you are looking for or need some additional advice and guidance, then our Student and Customer Services will gladly help. If you would like to complete a paper application form please use the form at the back of this prospectus or if you would like to talk to a subject-specific tutor prior to making your application, we can arrange this for you. Please call us on 01935 423921 or email us at [enrol@yeovil.ac.uk](mailto:enrol@yeovil.ac.uk).



# STUDENT LIFE

**At Yeovil College, we give our learners as many opportunities as possible to enhance their learning and social experience.**



## Students' Union

You will automatically become a member of the Yeovil College Students' Union when you become a student with us. Our union works hard to organise activities, trips and experiences to ensure that you have a great time whilst studying at Yeovil College. Don't forget to buy your NUS card which entitles you to many great high street discounts on food, clothes and college supplies.

## Student Celebration

Join us as we celebrate outstanding student success throughout the year at Yeovil College. Will we see you at our Oscar-styled Shining Stars Awards Ceremony next year?

## YC Edge & Enrichment

Spending time with like-minded people is a really important part of your experience at college, which is why our Students' Union has created a number of clubs and societies, including chess club, craft club, LGBTQ+ group and debating society. We also have a hugely competitive Sports Academy programme that also provides a whole range of opportunities to get involved and develop new skills. Take a look at Yeovil Edge for the five stands of enrichment and sporting opportunities available to all Yeovil College students.

## Student Space

We have several break-out areas and cafe style social spaces which provide chilled out areas for both social and study purposes.

## Sports Academy

We believe that everyone should have the opportunity to play and compete in sport at the highest possible level whilst studying at college. Our Sports Academy, which includes football, rugby, badminton, netball, basketball and more, claims many sporting titles and trophies.



## Trips and Visits\*

We will underpin your knowledge with practical experience through residential trips and visits, including Disneyland, New York, the Houses of Parliament, Capital of Culture cities or a quick tour of Europe. Our students absolutely relish the opportunities they have to travel to new countries and locations.

## Places to eat\*

You have a good selection of places to eat here on campus. Our main student café is Renaissance with its wide range of hot and cold lunch options and delicious home-made cakes. Located on the ground floor of the Leonardo building, the Vitruvian Café offers sub-way style lunch options, whilst our award winning restaurant Da Vinci is always a favourite with our students looking for substantial lunch options based within a relaxed environment.

## Costa\*

Costa is a favourite amongst our students. Tempting us with velvety flat-whites, frothy cappuccinos and intense espressos - it is a perfect morning pick-me-up!

## Social Action

We have a huge focus on social action, which is about people coming together to help solve problems and get involved with issues that are important in their communities. This will typically include opportunities around volunteering, fundraising and community projects. Social action can make a real difference to well-being and can strengthen and support economic growth.

## Duke of Edinburgh's Award (DofE)

DofE is a life-changing experience. A fun time with friends. An opportunity to discover new interests and talents. A tool to develop essential skills for life and work. A recognised mark of achievement; respected by employers. Yeovil College has an established Duke of Edinburgh's Award programme with many students benefiting from this enrichment offer.



\*Subject to change/Covid-19 dependent.



Trips and Visits



Sports Academies



Social Action



Fundraising



Student Celebrations



Clubs and Societies



Costa Coffee



Several Food Outlets

# SPORTS ACADEMY

Our Sports Academy is second to none! Here at Yeovil College, we are committed to providing the very best in sports education, enabling our learners to reach the very highest levels of sporting excellence. If football is your specialism, then you'll be pleased to know that we are linked to Yeovil Town Football Club through our Elite Player Development Programme (EPDP) and benefit from their first team and management support.

With state-of-the-art equipment, a dedicated strength and conditioning gym and two coach-led conditioning sessions per week, you will train alongside sports professionals in a specialised environment.

Many of our talented elite players have gone on to represent their country internationally at the very highest level.

## Sports Academy benefits:

- Up to 10 hours of professional coaching and competitive matches every week;
- Use of our gym facilities at massively discounted prices;
- Progression routes and links with various clubs and teams;
- Opportunities to gain coaching and officiating qualifications;
- Access to a wide range of volunteering experiences through our Sports Ambassador programme;
- Dedicated time to train.





# OUR SUCCESSES



**Alex Elwick won silver medal at AoC Golf Sports Completion.**



**Chloe and Nicole Summer dominated the Wodo European Championships in Dublin, finishing 1st and 2nd respectively.**



**Reuben Biggs won the bronze medal at the AoC Badminton Sports Competition.**



**Kingsley Latham joined Southampton Football Club.**

- Former Yeovil College student, Matt Buse, signed for Torquay United;
- Callum Morton signed a professional contract with West Bromwich Albion Football Club;
- Adam Harris won a Bronze medal in the AoC National Golf competition;
- John Byrne won gold in the South West AoC Regional men's fly and front crawl swimming competitions;
- Lily Kitto competed in the AoC Colleges National Ladies Hockey team;

- Former rugby student Jake Woolmore turned professional with Exeter Chiefs and has recently signed for Bristol Rugby;
- Ben Lloyd won the AoC Sport Regional South West Cross Country gold medal before going on to captain the South West team;
- Our mens rugby team won the Category 2 South West League;
- Our EPDP won the Category 2 Football League in 2018 and continue to play top level College football in Category 1.

# CAREERS HUB

At Yeovil College we have made a significant investment into establishing a strong Careers team, who will challenge and inspire our students to make the most of the wide range of opportunities available to them. We offer a careers programme, which gives our learners the chance to engage with employers and the 'World of Work', supporting learners to make informed decisions about their next steps. We aim to raise learners' aspirations and to be ambitious, as well as supporting them to maximise their potential.

## Careers Advice and Guidance

The Yeovil College team is committed to ensuring that our learners are ready for the next steps on their career journey. We work closely with The Heart of the Southwest Careers and Enterprise Company to ensure that we are meeting the eight Gatsby benchmarks of 'Good Career Guidance' :

1. A stable careers programme
2. Learning from career and labour market information
3. Addressing the needs of each pupil
4. Linking curriculum learning to careers
5. Encounters with employers and employees
6. Experiences of workplaces
7. Encounters with further and higher education
8. Personal guidance.

We will give you space and time to allow you to meet with a professional Careers Adviser throughout your time with us, allowing you to discuss your career aspirations. They will support you to look at your career pathway and the vast range of options available to you. You will also receive specialist career information from your chosen industry from visiting lecturers and via bespoke master classes.

We use a range of online platforms which have been designed to help you map out your career pathway and options, which will in turn help you reach your career aspirations. You will be able to access a host of useful information via our Careers Moodle page to help you navigate the vast amount of useful career related information which has been arranged to support our college course offer. We have completed the hard-work and broken down all advice into career specific areas to enable our students to navigate the vast amounts of available careers information, swiftly and with ease.



**James Lock, Level 3 Business,**  
work placement at  
Williamsons Solicitors

## We will look at:

- Job opportunities, careers and job roles of interested
- Potential earnings for your dream job
- Current job opportunities in Somerset and beyond
- Education and training offered by Yeovil College to help you secure your dream job
- A CV support tool.

## Our students will:

- Improve their employability skills
- Develop skills relevant to their future career
- Gain a greater insight into their chosen industry
- Receive personal coaching and mentoring from an established manager.

## Industry Placements and Work Experience

The Yeovil College Career Hub team is a dedicated team to support learners with their placements ensuring that learners have an opportunity to try out potential careers pathways and learn skills and knowledge in the workplace environment.

Our industry placements have been designed to give students a valuable opportunity to put their learning into practice, develop excellent skills and to become truly employable. All Level 3 technical/vocational courses include an element of industry placement experience, of around 315 hours, equivalent to around 45 full days at work. If you would like to know more about this please contact the college and ask for the Work Experience Team.

## The Yeovil College pre-election hustings 2019



# WIFI ENABLED CAMPUS

Yeovil College is in the final stages of an ambitious and exciting development to transform the digital infrastructure of its campus. Investment of more than £2.4 million will greatly enhance the experience of students and staff to enable wireless connectivity with almost limitless bandwidth and speed of connection everywhere.

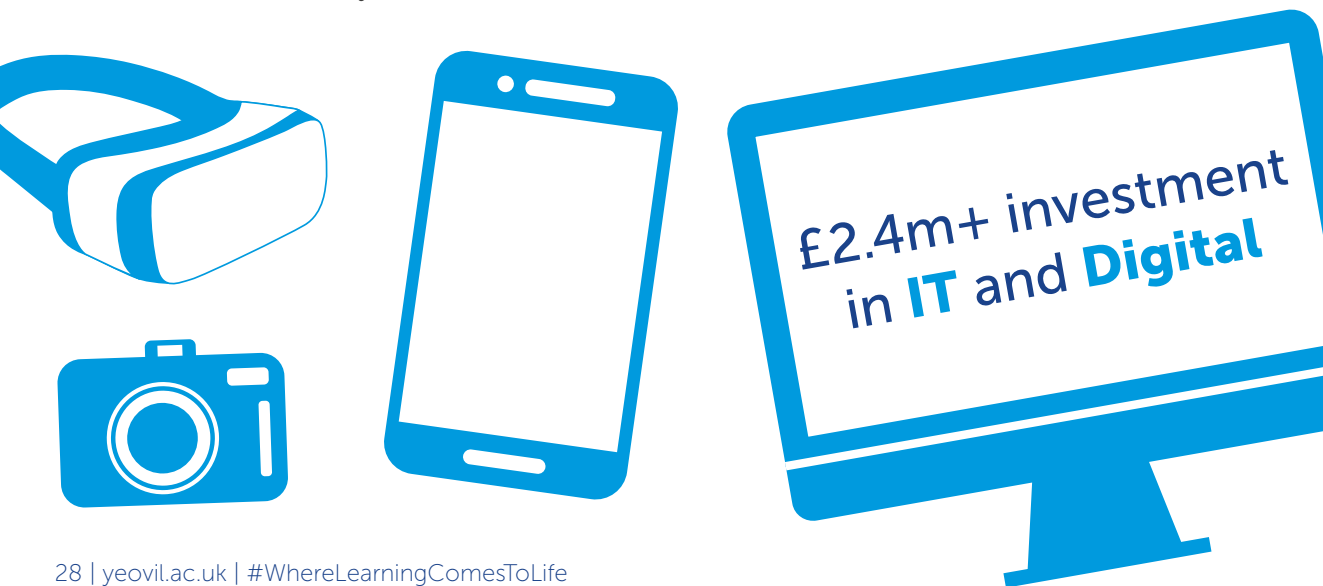
Delivery in and out of the classroom will change significantly within the next five years with more opportunities for:

- Collaborative learning;
- More flexibility where and when work is completed;
- Improving communication throughout our college community;
- Developing learning opportunities through Artificial Intelligence (AI) and Virtual Reality (VR) as part of 'normal' college life.

Being described as the fourth industrial revolution, the digital developments Yeovil College is embracing and investing in for its learners, will change the experience on campus. A key aspect of this evolution is the need for every learner to be equipped with a digital device to fully enjoy the enhanced learning and wider campus experience.

Working with trusted partners, we have selected a number of devices, which we would recommend for value, durability, compatibility and fitness for purpose. We have developed arrangements to allow the purchase or lease of the recommended devices for students so they can arrive to complete their studies from September 2021 ready to make the most of our outstanding technology enabled campus.

More information about the devices and ways to access them is available on our website – [www.yeovil.ac.uk](http://www.yeovil.ac.uk) or contact us.





# A LEVELS

## Kingston Sixth Form Centre



### **SOPHIE HIPGRAVE, PREVIOUSLY OF PRESTON SCHOOL**

"I have really enjoyed my time at Yeovil College and would like to thank my tutors for helping me to achieve my ambition of applying to study Veterinary Science at Liverpool University."

Studied A Levels Biology (A\*), Chemistry (A), Geography (A\*) and EPQ (A\*) at the Kingston Sixth Form Centre.



# BUILDING A SUCCESSFUL FUTURE

Yeovil College's Kingston Sixth Form Centre has a long tradition of achieving high levels of academic success, offering learners the right support to achieve challenging targets and secure a bright future. Our results speak for themselves. Yeovil College is one of the highest performing colleges in the country, with some of the highest performing A Level students. Our results speak for themselves. Last year during the 2020 academic year, our A Level students exceeded all targets, our highlights include:

- 100% of Yeovil College A Level students passed their qualifications for the fifth successive year
- 100% of subjects achieved a 100% pass rate
- 94% of students achieved high grades (A\*-C).
- 69% of students achieved A\*-B

We also secured excellent next steps and university destinations for our learners, with many achieving Russell Group university places for our learners. Join the excitement and, with determination and the right support, you can achieve great things. If you are committed, motivated and work hard, Yeovil College will ensure you have the right tools to fulfil your ambitions.

## Building your A Level Study programme

Many of our A Level students have a clear pathway in mind, with a strong understanding of the career that they would ultimately like to pursue. To enable this to happen, they need to experience a number of subjects which they may not have previously studied, but may be critical to securing their next steps to their planned career. With this in mind, we have added a number of subjects to support a move into specific careers, for example:

- Sociology
- Psychology
- Law
- Criminology
- Environmental Science.

All A Level programmes at Yeovil College last for two years and are built upon the linear model, meaning that in most cases, exams are taken at the end of the two year period and will be the only influencing factor on the final grade awarded to the student.



“ I am immensely proud to work with the brilliant Kingston Sixth Form Centre team as we continue to build on the strengths of our thriving department. I am always struck by the high quality of teaching throughout the department, but also the dedication of our students in working to exceed expectations. We have fully embraced the new linear A Level curriculum and are maximising the opportunities to deliver truly outstanding A Level programmes that prepare students for their next steps, whether that's university, higher apprenticeships or employment, whilst continuing to challenge and inspire students to achieve beyond their potential. ”

Matt Holmes, Head of the Kingston Sixth Form Centre



“

Completing my EPQ has helped me develop valuable skills such as presentation skills, using references, and time management skills. Writing an essay and creating a presentation was a challenge but it has given me beneficial experience for University and my future career.

”

Charlotte Gager, of Buckler's Mead Academy, studied A Levels in English Language (B), Sociology (B), Psychology (B) and the EPQ (A). She also spent voluntary time in Zanzibar where she taught over 200 students English and has spent the past year volunteering in Yeovil College's Marketing department before she continues her education at Portsmouth University where she will be studying Public Relations.

## Extended Project Qualification (EPQ)

All A Level students will have the opportunity to undertake a research-based Extended Project Qualification (EPQ) as part of their full study programmes. The EPQ is highly recommended for those students who have university aspirations.

The EPQ is designed to support students in developing a wide understanding of research skills, alongside sound analytical, reflection and project management experience. Our students undertake a project of their own choosing, which expands and stretches their understanding, enabling them to thoroughly research a specific subject. Universities look favourably upon an EPQ as it demonstrates and quantifies many desirable qualities, which will support students during their transition to university.

The EPQ is assessed using a number of measures which include a formal written research report, or complete a practical project with word written research report and a presentation of your findings. The latter being the highlight of the EPQ project and a chance to celebrate and share your research with a wider audience.

## WHY STUDY WITH US?

- 100% A Level pass rate for the fifth year running;
- Our A\*-C grades are represented at 94%, achieving well above the national average.
- Our value added score is the best of all of Somerset and Dorset colleges;
- Smaller class sizes for personalised teaching and learning;
- Academic and personal tutorial programme;
- Central location means less time travelling and more time learning;
- A carefully chosen A Level programme means you're always taught by academic specialists;
- Quiet and academically focused study areas;
- Annual revision conference;
- Parents receive regular reports and opportunities to attend parents evenings.

# ELEVATE

## *LOOKING TO THE FUTURE*

Yeovil College has developed a bespoke programme which supports our most talented A Level students to develop a range of skills, qualities and behaviours, which will enable them to exceed in their career and ambition. This inclusive and aspirational group enables students to maximise their learning experience and progression opportunities, whilst studying for their A Levels at Yeovil College's Kingston Sixth Form Centre.

We include a number of stretch and challenge activities to prepare our students for a better future, including:

- University visits
- University speakers, including guest speakers from Oxford, Cambridge and Russell Group universities
- Mentoring programme
- UCAS support
- Employer visits and master classes
- Mock university interviews
- Membership to our debating society and elite Sports Academy.

To join our Elevate programme, you will need at least eight GCSEs at grade 7 or above. Students who have achieved lower grades may also be able to join, subject to a formal interview. Elevate will allow you to describe a number of activities and exposures which others will not have the opportunity to experience, and will also entitle you to true differentiation in the eyes of a university and future employer.



# WE CARE ABOUT VALUE ADDED!

## What is Value Added?

Educational Value Added is a method to measure the impact of the teaching and learning contribution by a Sixth Form on a student in any given academic year. It is a way for you to measure our effectiveness and is much more accurate than league tables.

## Why we value it?

Value Added is extremely important to us because it calculates:

- How a student performed at GCSE;
- The minimum expectation in the current academic year;
- How students progress and perform after spending two years at the Kingston Sixth Form Centre.

# PROGRESSION

Once you have completed your A Levels at Yeovil College's Kingston Sixth Form Centre, your next steps and career opportunities are vast, both within our region and beyond. Here are just some of the options available to our students:

- University
- Degree level qualifications at the Yeovil College University Centre
- Higher and Degree Apprenticeships within our business community
- Professional and sector specific qualifications
- Employment.

We are extremely proud of our student alumni, and we work hard to ensure that their destination is tailored to their career choices, ensuring that all opportunities are met and dreams are realised. We boast a strong alumni, with students regularly securing Russell Group university offers, including studying at Oxbridge institutions. We are equally proud in our ability to retain talent through our own University Centre, through our partner universities (University of Gloucestershire and Plymouth University) and through progression to our quality, locally based universities.





# OUR OFFER

In order to study a programme of A Levels at Yeovil College you will need to achieve a minimum of 5 GCSE's at grades 9 – 4. In order to ensure that you are best prepared to be successful in individual subjects we may require you to achieve specific minimum grades in Maths, English or other specialist subjects at GCSE.

A Level Subject	Minimum English Grade	Minimum Maths Grade	Other specific entry requirements
<b>A Level Art &amp; Design</b>	4	4	GCSE Art at grade 4 is desirable but not essential
A Level Art and Design covers areas of Fine Art such as drawing, painting, printmaking, mixed media, sculpture and design and explores the work of various artists, art movements and themes. Coursework encourages you to develop skills and understanding of visual language and associated practical skills, whilst planning the work in context through researching the work of others. There are opportunities to visit national galleries and exhibitions like Whitechapel, Saatchi and Tate Modern. Our creative areas are undergoing a significant overhaul and investment as part of our Institute of Technology award (IoT).			
<b>A Level Biology</b>	5	6	GCSE Biology or Combined Science at grade 6 or above is essential
Studying A Level Biology gives you a greater awareness of human interaction with the environment and a better understanding of how the body works. Topics covered include Cell Structure, Important Biological Chemicals, DNA, Nutrition, Reproduction, Microbiology, Respiration, the Nervous Systems and Evolution. Learners have the option to travel to an exotic location, such as Madagascar, to learn about local ecosystems and wildlife.			
<b>A Level Business</b>	4	4	A genuine interest in business
A Level Business is a relevant, modern course which develops your knowledge and understanding, preparing you for a variety of careers. This wide-ranging Business course covers all aspects of business including management and leadership, improving marketing, financial and operational performance.			
<b>A Level Chemistry</b>	5	6	GCSE Chemistry or Combined Science at grade 6 or above is essential
A Level chemistry underpins many other sciences, so is therefore valued by many universities and employers alike. This subject encompasses Atoms, Bonds and Groups, Chains, Energy and Resources, Rings, Polymers and Analysis, Equilibrium, Energetics and Elements and Practical Skills. Our well-resourced laboratories enable you to further develop analytical science skills to prepare you to further develop your science skills.			
<b>A Level Computer Science</b>	5	6	A GCSE Science at grade 6 or above is desirable but not essential
You will learn about the hardware and software aspects of computing in both theoretical and contextual environments. You will gain an appreciation of the underlying principles of modern computer systems and software development using a range of programming language and software packages.			

<b>A Level Economics</b>	4	4	A genuine interest in the business environment
A Level Economics will give you an excellent understanding of how individuals, firms and governments on a local, national and global level meet conflicting needs and wants with scarce resources. You will investigate microeconomic activity, such as the impact of individual decisions, the importance of competition and how markets operate, as well as the 'bigger picture' (macroeconomics), the global impact of financial markets and monetary policy.			
<b>A Level English Language</b>	5	4	N/A
If you take A Level English Language at A Level you will become a language detective, searching for linguistic clues in speech and writing, gathering evidence and presenting your case with conviction and flair. You will learn to look at language with new eyes and hear it with new ears, as well as growing as a writer with opportunities to write in a variety of styles. You will be encouraged to produce real material, test it on your target audience and then redraft it until it reaches a professional standard.			
<b>A Level English Literature</b>	5	4	N/A
During this subject, you will read and analyse a range of texts from different genres and periods, including novels, short stories, drama and poetry. You will study six texts in detail during this A Level, including Shakespeare. You will take part in lots of class discussion for this subject, so you can develop your own ideas about the texts we explore.			
<b>A Level Environmental Science</b>	5	5	GCSE Geography at grade 4 is desirable but not essential
If you have a keen interest in the sustainability of our planet you will find this A Level engaging and thought provoking. With topics that include the biophysical environment, energy resources, pollution and sustainability there is plenty to explore and research. Environmental Science is a holistic subject covering many interconnected systems and processes and delves into how humans and the natural world are intrinsically linked together. A deeper understanding of evidence-based information and quantitative data is also developed through a range of practical activities.			
<b>A Level Further Maths</b>	5	8	You will need to study A Level Maths alongside Further Maths
Do you find Maths fascinating? Are you likely to go to university to take a study programme which contains a lot of Maths? A Level Further Maths is designed to deepen your mathematical reasoning and knowledge by exploring exciting and powerful new areas like complex numbers and matrices. Further Maths is extremely useful in degree subjects such as Physics, Computing Science and Engineering.			
<b>A Level Geography</b>	4	4	GCSE Geography at grade 4 is desirable but not essential
There has never been a better or more important time to study Geography. With growing global and media interest in issues such as climate change and tectonic hazard mitigation, Geography is one of the most relevant courses you could choose to study. Some topics studied will be familiar from GCSE studies whereas others will be new and focussing on current issues covered in the news and social media. It's not all theory - you'll have the opportunity to visit places of geographic interest and roll up your sleeves with some fieldwork!			
<b>A Level History</b>	5	4	GCSE History at grade 5 is essential
The study of History produces a unique and challenging perspective regarding the relationship between ordinary people and the social economic and cultural situation they developed in. This course examines the issue of rights and freedoms in the modern world, with a particular focus upon 20th century American history and India's struggle for independence from British rule.			

<b>A Level Law</b>	5	5	N/A
A Level Law provides an introduction to the legal system in England and Wales and the overlapping principles between law, morality and justice. You will gain an insight into legal liability in relation to criminal law, tort law and contract law or human rights as well as exploring the changing nature of the law. Throughout your studies you will develop a variety of skills including legal reasoning, analysis and constructing legal arguments.			
<b>A Level Maths</b>	5	6	N/A
This A Level is designed to develop your understanding of a wide range of mathematical ideas and your ability to use them to analyse and solve problems in a variety of applications. A Level Maths encompasses pure maths, statistics and mechanics.			
<b>A Level Physics</b>	5	6	GCSE Physics or Combined Science at grade 6 or above is essential
A Level Physics is at the very heart of science and technology and opens the door to a wide range of careers. This subject looks in details at the fundamental workings of our universe, from the very smallest scales in particle and nuclear physics, to the very largest in astrophysics and cosmology. You will carry out investigations, use sensors and probes for data collection and use software for analysis.			
<b>A Level Photography</b>	4	4	GCSE Art at grade 4 is desirable but not essential
A level Photography will enable you to develop a wide range of technical and creative processes including the creation, selection and manipulation of analogue and digital imagery. You will be encouraged to develop and extend your skills utilising access to our professional studio, IT equipment and industry professional teaching. We will help support you achieve your creative potential through learning to edit to a high standard within Photoshop and Lightroom. Visits to local and national galleries will help to support your theory and contemporary photographer awareness. This course encompasses all you need to achieve your next steps of university entrance to study Photography as a professional.			
<b>A Level Psychology</b>	5	5	A GCSE Science at grade 5 is also essential
Psychology is the scientific study of the mind and behaviour. It is a multi-dimensional subject and includes many sub-fields such as human development, health, clinical, social behaviour and cognitive processes. The study of psychology develops an array of transferable skills which can lead to a choice of careers.			
<b>A Level Sociology</b>	5	5	N/A
A Level Sociology looks at people, their experiences and beliefs; how they live their everyday lives and the way those lives are influenced by society. Studying Sociology will help you understand your own experiences and those of others, encouraging you to look at issues from different perspectives before moving towards an informed view.			
<b>Diploma in Criminology L3</b>	4	4	N/A
Criminology aims to build knowledge and understanding of how criminal systems are developed in purposeful contexts linked to the criminal justice system. Criminology encourages students to adopt an enquiring, critical and reflective approach to the study of crime whilst reflecting on and developing their own values, opinions and attitudes in the light of their learning.			

<b>Diploma in Performing Arts L3</b>	4	4	GCSE Drama or Dance at grade 4 or equivalent is desirable but not essential
You will explore the creative and commercial environment of performing arts by furthering your understanding of a range of performance and choreography skills with a focus on the main dance specialisms. You will develop your skills in Ballet, Jazz, Contemporary and Urban alongside master-classes delivered by industry professionals.			
<b>Diploma in Sport L3</b>	4	4	GCSE PE at grade 4 is desirable but not essential
You will develop your specialist knowledge, practical skills and understanding in areas including Nutrition, Physiology, Fitness, Sports Massage and Sports Injuries. You will gain knowledge of different sports whilst focusing on your chosen sports specialism. You will also visit Wimbledon, Twickenham and Yeovil Town Football Club. You will complete work experience and organise events and activities, officiating and coaching.			

## Certificate in Maths (Core) L3

This is a one year programme equivalent to half an A Level, which is highly valued by both universities and employers alike. Particularly useful to compliment Psychology, Geography, Environmental Science, Engineering.

# T LEVELS

<b>T LEVEL IN SCIENCE</b>	4	4	GCSE grade 4-9 profile
The T Level in Science will provide learners with the knowledge, skills and behaviours needed to progress into skilled employment or higher-level technical training or study in the Science sector. The core content will apply to a range of industries that employ Laboratory Scientists such as scientific and clinical practice, core science concepts, safety and environmental regulations in the science sector, managing information and data within science. Learners will undertake a minimum of 45 days industry work placement.			
<b>T LEVEL TRANSITION PROGRAMME IN SCIENCE</b>	GCSE English will be studied	GCSE Maths will be studied	GCSE grade 3 and below profile
Learners not yet ready to undertake study at Level 3 will undertake a T Level Transition Programme in Science alongside English and/or Maths to enable progression to the T Level. The core content will apply to a range of industries that employ Laboratory Scientists such as scientific and clinical practice, core science concepts, safety and environmental regulations in the science sector, managing information and data within science.			



Jordan Welsh studied A Levels in Biology (A\*), Chemistry (A\*) & Maths (A\*) at Yeovil College and secured a place at Oxford University to study Chemistry, formerly of Buckler's Mead Academy.





**CLARA MACDONALD, PREVIOUSLY OF PRESTON SCHOOL**

"I have loved my time at Yeovil College, as it has provided me with confidence and independence for my next steps to university. I'm thankful to both my tutors at Preston School and Yeovil College for supporting me during my academic studies."

Studied A Level Art and Design (A), Biology (A), Business (A) and EPQ (A\*) at the Yeovil College Kingston Sixth Form Centre.



**KATHERINE FRY, PREVIOUSLY OF WESTFIELD ACADEMY**

"I'm very happy about my results; they are extremely unexpected as I only needed a BBB for university. Just shows if you put the work in you get the results. The teachers were amazing and supported me with whatever I needed throughout my time. VERY HAPPY!"

Achieved A Level Geography (A\*), Psychology (A), Biology (A) and EPQ (A\*) at the Yeovil College Kingston Sixth Form.

**100% HIGH GRADES (A\*-C)**

in Accounting, Art & Design, Photography, Computer Science, Economics, English literature, Film Studies, Further Maths, Geography, History, Law, Maths and Physics.

(Source: A Level results August 2020)

**Geography  
100% pass  
rate, 100%  
at A\* - B**



**Did you  
know?**

All students have a personal tutor to support them to reach their maximum potential.



**100%  
A LEVEL PASS  
RATE AGAIN**

For the **fifth** year running we have smashed 100% A Level pass rate, making us the best in the whole of Somerset, again!\*

\*NARTS 2020

# VOCATIONAL



## **PHOEBE GARDENER – LEVEL 3 SPORTS STUDENT AT YEOVIL COLLEGE D\*, D\*, FORMERLY OF HUISH EPISCOPI ACADEMY.**

"I really enjoyed my time at Yeovil College, it introduced me to lifelong friends and an extremely high quality level of education which has served me incredibly well into a brilliant career path. I am currently studying Cardiac Physiology at The University of the West of England (Bristol UWE), whilst working full time at Yeovil District Hospital. This is a Higher Education Apprenticeship where I am based full time in the workplace with a day release for online lectures and to complete coursework. Three times a year I travel to The University of the West of England for a week each time where I will sit my exams and any required practicals. I would definitely recommend studying at Yeovil College as my experience has been truly fantastic. The Sports department has supported me throughout my journey and encouraged me to succeed and achieve as much as I can. You have access to fabulous state-of-the-art-sport facilities and excellent coaches whom do as much as they can to support, encourage and bring out your best performance / ability possible. You are provided with numerous opportunities within the sport department to progress to playing at a professional level along with gaining additional qualifications where applicable, like officiating or coaching certificates. You have constant support and help whenever needed with both your coursework and your sports performance. You have numerous opportunities to try a wide array of different sports with access to professional and motivating coaches."

# BUSINESS



#WhereLearningComesToLife



## Courses

Business Administration

L2

Business

L3

T Level Transition Programme  
in Digital Business

L2

T Level Digital Business

L3

A solid understanding of business and commercial principles, coupled with entrepreneurial vision will enable you to develop a strong, prosperous and exciting career in almost any sector. Our courses are taught by experts with a huge amount of practical industry experience. Our curriculum has been designed with the support of employers and we run regular master classes which are delivered by people who are currently working within the industry; people who are respected professionals within our community. We have introduced quality and relevant work experience opportunities into our curriculum, which when coupled with employer mentoring and the delivery of real and live briefs, will create highly employable and desirable students, who are ready to join the world of work or are perfectly equipped to take on the challenge of university life. You will leave Yeovil College with the set of skills, knowledge and behaviours local employers desire.



"One thing I love about Yeovil College is that you get treated like an adult and the teachers take into consideration what you say. Also in college you get to learn in various different ways instead of just books. We have employers coming in to talk to us through a variety of masterclasses. I am very lucky to be able to learn in an award winning College to get the best out of my education in preparation for starting my Business degree. The business level 3 course gives me an amazing insight into the real everyday working life providing that extra bit of knowledge that you otherwise wouldn't have."

**Ben Hall - Level 3 Business Foundation Diploma student at Yeovil College, formerly of Stanchester Academy.**

## Which level is right for me?

We have a course to suit everyone, at all levels and abilities. Take a look at page 16 for details regarding our study programme entry requirements.







# Careers

Marketing Manager  
Insurance Manager  
Personal Financial Advisor  
Management Analyst  
Executive Assistant  
Accountant  
Advertising Manager  
Investment Broker  
Business Manager



"We work with a huge number of employers who bring their professional business experience to the classroom through regular masterclasses. Our students also benefit from quality work experience in organisations such as the Western Gazette, Screwfix, Lloyds and Old Mill which enables our students to be confident, knowledgeable and career-ready young people.

**Donna Short, Director at Yeovil College**

## Student Experience



Former Business student, Jess Chamberlain, now employed by Leonardo, returned to Yeovil College to present career opportunities available within the 'Leonardo Graduate Scheme' for local students.



David Holmes, International Senior Business Leader, delivers regular master classes to our business students to build on theories about the real world!



Students supported our business partners Bradfords Building Supplies with their strategic visual merchandising, where they were given a free reign to design the refreshed 'Big on deals' promotional campaign.

## Where will you study?

Industry is your classroom. Although you will be based within our Kingston Building, we will turn it into a professional business environment through visiting lecturers, masterclasses, live briefs and work experience.

## Did you know?

The strength of a solid business qualification is that it will enable you to progress your career into almost any sector of your choosing, including giving you the skills to progress to university or operate your own business. A critical element of our success is that we run a model where experts from industry teach our students. All Business lecturers at Yeovil College are business specialists in their own right, with bespoke master classes delivered by practising professionals from our business community.



# COMPUTING

#WhereLearningComesToLife



## Courses

Networking and Cyber Security



Computing



T Level Transition Programme  
in Computing



T Level in Computing

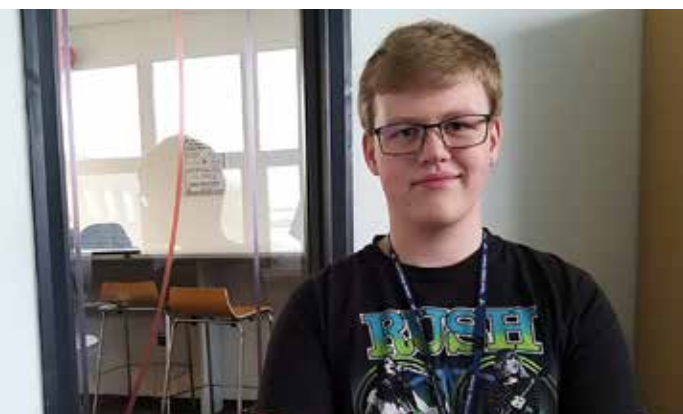


The rapidly expanding and ever-changing world of computing is an exciting place to be, particularly at Yeovil College. Our Computing department has received a significant share of the Institute of Technology (IoT) funding which has enabled us to build a new top-of-the range, industry hardware suite. The dedicated IT Lab is perfect for the configuration of networking components and software development for popular games development units. There are lots of options for you if you have an interest in this area and we can help match your appetite to the right course.

We have introduced our new ESports and gaming units which meets the ever-growing culture of sports competition using video games. Whether you aspire to develop websites, programme new and innovative databases or design your own games, we are confident that we have the perfect Computing qualification for you.

## Which level is right for me?

We have a course to suit everyone, at all levels and abilities. Take a look at page 16 for details regarding our study programme entry requirements.



"So far in my life I have attended schools in three countries and Yeovil College has been my favourite. My lecturers have been extremely supportive throughout my studies here and have helped me to apply to Cambridge University where I hope to be accepted for Computer Science."

**Benjamin Noer** – Level 3 Computing student at Yeovil College, D\*, D\*, D.





# Careers

Software Developer  
Systems Analyst  
Technical Support/Helpdesk  
Website Developer  
Games Developer  
Software Tester  
Cyber Security Analyst  
Cyber Security Engineer  
Content Creator  
Shoutcaster  
ESports Analyst/Host



"Over recent years we have employed a number of students whom have completed their level 3 qualification at Yeovil College and found the skills they have developed to be the perfect match for our organisations needs."

**IT Employer Partner**

## Student Experience



Yeovil College University Centre student, Paul Richardson, delivered Cyber Security sessions to our Level 2 Computing students as part of his Foundation Degree in Computing.



A huge part of the curriculum is undertaking relevant work experience and industry placements across the region.



More learners than ever undertook work placements, with many completing over 300 hours in a wide variety of businesses such as Screwfix, Old Mill & Hidden Need Trust.

## Where will you study?

You will be based within our brand new IT Labs which have undergone significant investment and transformation. All Computing teaching and practical engagement takes place in a dedicated space on the second floor of the Kingston Building.

## Did you know?

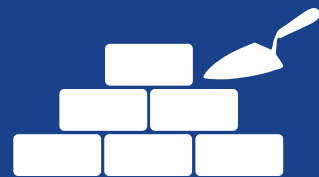
We are the only college in South Somerset to be represented within the Institute of Technology (IoT), allowing inward investment into the Computing curriculum area and the development of an IoT Computing Innovation Centre.



Tel: 01935 423921 | Email: [enrol@yeovil.ac.uk](mailto:enrol@yeovil.ac.uk) | 43



# CONSTRUCTION



#WhereLearningComesToLife



## Courses

Bricklaying (Trowel Occupations)



Carpentry & Joinery  
(Wood Occupations)



Construction and The Built  
Environment



Electrical Installation  
(Building & Structures)



Fire & Security



Plumbing Studies



As one of the largest providers of construction education and training in the region, and thanks to our industry-standard facilities and excellent teaching, we are considered a Centre of Excellence. Our new Screwfix Trade Skills Centre provides unrivalled training facilities for the industry. Yeovil College offers hands-on training that will equip you to build a great career in one of many building trades whilst developing strong employability skills for the future. Our workshops are a real strength and we continue to invest in them to ensure that we provide the very best facilities for both employers and students. This year we created a multi-booth, industry-standard Fire and Security workshop to support our FESS apprentices and we are delighted to introduce a new Fire and Security qualification to this year's curriculum offer.

## Which level is right for me?

We have a course to suit everyone, at all levels and abilities. Take a look at page 16 for details regarding our study programme entry requirements.



"As a former Plumbing and Heating Apprentice, I know first-hand the benefits of apprenticeships. Yeovil College has enabled me to build and grow my business into the success it is today – being shortlisted for UK Plumber of the Year!"

**Caine Curtis – Former Plumbing and Heating Apprentice at Yeovil College.**





# Careers

Bricklayer  
Building Surveyor  
Carpenter  
Electrician  
Health & Safety Advisor  
Heating Engineer  
Joiner  
Kitchen Fitter  
Maintenance Technician  
Plumber  
Project Engineer  
Fire & Security Engineer



"We boast some of the top construction facilities in the country, supported by local businesses; our results position us as one of the best performing construction departments in the UK; and we strive to place our students within apprenticeships as soon as they are ready and able. Employers actively contribute to the development of our Construction curriculum, ensuring that students leave Yeovil College with the right skills and behaviours to successfully enter the world of work."

**Scott Austin, Curriculum Area Manager, Construction**

## Student Experience



Yeovil College Construction students put their skills and knowledge into practice during a visit to a Persimmon Homes development. They spent time with trade professionals understanding the stages of first fix through to final fix.



The Landmark Trust commissioned Carpentry and Joinery students to tackle a particularly special project – the replication of a piece of work by leading British Architect from the late 1800s, Charles Francis Annesley Voysey, to display in Winsford Cottage.



Construction students attended a 'Be-Safe' training session delivered by leading experts, Makita, where they developed an understanding on how to safely operate power tools in different industry environments. This is a key part of our L1 and L2 student's work experience.

## Where will you study?

You will study in our dedicated, industry-standard Construction workshops which have been designed to replicate real world environments, allowing you to develop essential Construction employability skills.

## Did you know?

Our facilities are a key strength. At Yeovil College you will study in dedicated workshops which have been designed to replicate the workplace. There are separate workshops, with individual bays and work stations for every trade offered within our Construction department. You will also have the opportunity to visit live construction sites, specific to your trade, enabling you to enhance your knowledge and understanding of the industry. This is an important part of our student's work experience and immersion into the construction industry.



# CREATIVE INDUSTRIES



#WhereLearningComesToLife



## Courses

Art and Design



Creative Digital Media Production



Graphic Design & Photography



Foundation Diploma in Art and Design



Our award-winning Digital Media, Art and Design department is thriving! Our learners leave us ready to work in the Creative Industries with impressive portfolios. We combine strong practical education with excellence in academic teaching to encourage reflective, critical artists, designers and media specialists, helping you to develop the knowledge and techniques you need to gain employment. Our facilities include exhibition spaces and art, design and media workshops. You will work and learn in modern, industry standard studios which include a Digital Photography Studio, Darkroom, TV, Film, Sound and Radio Studios, Digital 3D Fab Lab, Immersive VR Lab, Graphic Design Lab, Digital Media and Special Effects Lab, Printmaking, Fashion and Textiles Studio.

### Which level is right for me?

We have a course to suit everyone, at all levels and abilities. Take a look at page 16 for details regarding our study programme entry requirements.



"After Yeovil College I went on to study BA Hons Media Production at Bournemouth University. Yeovil College's media department motivated and guided me to get to where I am today. I learnt a great deal from the lecturers and course. It was fantastic to be taught by such caring and talented lecturers who have so much experience. Yeovil College has given me the best production practice to help me achieve my goals. If it wasn't for my experience at Yeovil College, I wouldn't have such a good foot in industry."

**Skeye Hewlett** - Former BTEC Level 3 Extended Diploma in Creative Media Production student at Yeovil College, formerly of Stanchester Academy.



WEST OF ENGLAND

I	N	S	T	I	T	U	T	E	OF
T	E	C	H	N	O	L	O	G	Y



# Careers

Graphic Designer  
Fashion Designer  
Fine Artist  
Painter  
Sculptor  
Architect  
Sound Technician  
Broadcast Journalist  
Director  
Production Manager

Games Designer  
Presenter  
Film Producer  
Product Designer  
Web/App/VR  
Designer  
Animator  
Photographer  
Interior Designer



"Our students develop strong creative and employability skills such as creative problem solving and project working skills which enable them to progress onto the next level of their course, to university, into employment and/or to an apprenticeship in this exciting and growing sector. Every year we have so many success stories including learners getting into the best universities, creating real design work for clients and films shown in cinemas around the country."

**Adrian Ponter, Curriculum Area Manager, Creative Industries**

## Student Experience



Our final end-of-year Media showcase is the ultimate highlight of the year. Staff and students come together to celebrate video, audio and print media productions.



Level 3 Media student Tom Bunce undertook work experience at Abbey 104 Radio as part of his study programme, and he ultimately secured his own show on the station.



Former Media student, Patrick Walsh, returned to Yeovil College to share his experiences and insights following time spent on the set of award winning film, 1917. Patrick described life as a World War 1 Private in the film, which recently claimed a Golden Globe.

## Where will you study?

You will study in a variety of professional and creative spaces using industry standard resources alongside visiting creative industry employers and participating in work experience. You will work on real design briefs and take part in a variety of competitions.

## Did you know?

We are one of only a handful of recognised Institutes of Technologies (IoT) in the country, and the only one in South Somerset, which means that we are delivering a higher set of skills and knowledge within Creative Industries mapped to the government's skills agenda. We are in the process of making a huge capital investment into our Creative Industries workspaces and studios to ensure that they align to industry-standard environments, which make our students extremely employable within this industry. Well known former students include musician PJ Harvey and fashion designer Alice Temperley.

# ENGINEERING



#WhereLearningComesToLife



## Courses

Craft Engineer



Technical Engineer



Technology is moving faster now than at any time in history and it is our engineers who are driving that pace. Engineers will solve many of the problems facing the world today, such as equipping countries with the technology to make more efficient use of the increasingly scarce natural resources and even developing sustainable sources of energy for our future generations. Our aim is to provide a tailored study programme that will give you your own specialist knowledge, but also the basic skills and knowledge that employers are looking for. We offer programmes from Level 2 through to university level and degree apprenticeships, with many of our learners already in work and looking to further their career or enhance their skills.

### Which level is right for me?

We have a course to suit everyone, at all levels and abilities. Take a look at page 16 for details regarding our study programme entry requirements.



"The facilities and experience of the lectures at Yeovil College have helped me towards a greater understanding of the aircraft, contributing directly to my role as a Mechanical Degree Apprentice at Leonardo. Working with aircraft every day, from design and planning to customer support and programme management, requires a high level of knowledge and Yeovil College has provided the foundations of this knowledge for me to apply within Leonardo."

**Anthony Chiu – Mechanical Degree Apprentice at Leonardo, formerly of Preston School.**



WEST OF ENGLAND

INSTITUTE OF  
TECHNOLOGY





# Careers

Aerospace	Robotics
Architecture	Geotechnics
Civil Engineering	Biomechanics
Industrial Engineering	Machinist
Electrics	Welder
Engineering Technology	
Project Management	
Mechatronics	



"Here at the engineering department, the team is made up of sector experts, renowned for their skills and knowledge. You will have access to a Lynx helicopter where you can apply and develop new skills, understanding and theories. It is an exciting time to join the engineering department at Yeovil College! In partnership with the IoT, we are investing £500k in new state-of-the-art training equipment and software, allowing us to give you the expertise required to be successful in your chosen engineering career."

**Chris Caldwell, Curriculum Area Manager, Engineering**

## Student Experience



Our Engineering team spent time at Navy Wings in the heritage hanger looking at some of the very best British planes in existence. Many projects were discussed, including students supporting restoration projects.



Our Engineering students visited Paris' JEC World event. They also took a trip to the war memorial at Gare du Nord and saw the Eiffel Tower.



Europol UK joined our BTEC Level 3 Composite Engineering students to deliver a masterclass around how composite mould tools are made, whilst demonstrating some of the techniques used during the process.

## Where will you study?

Engineering students will be predominantly based within the workshops and classrooms within the Leonardo building. We use a mixed approach to teaching, learning and assessment.

## Did you know?

We are one of only a handful of recognised Institutes of Technologies (IoT) in the country, and the only one in South Somerset, which means that we are delivering a higher set of skills and knowledge within Engineering Industries mapped to the government's skills agenda. We are in the process of making a huge capital investment into our Engineering workspaces to ensure that they align to industry-standard environments. We work with many of the regions finest engineering employers, including prototyping parts for performance cars, including the world renowned Ariel cars.



# FOUNDATION LEARNING



#WhereLearningComesToLife



## Courses

Preparation for Life and Work

Preparation for Adulthood

Supported Internships

Progression Pathways Vocational

Sometimes students need some additional time, support and space before they are ready to progress to a full college study programme, which is where our Foundation Learning programmes can really help. Foundation Learning study programmes are individually tailored for young people with additional needs.

Yeovil College has an excellent track record of successfully supporting students with opportunities to progress on to other programmes, Apprenticeships or employment.



Rhys began his journey at Yeovil College back in 2017 on a Work Preparation Course. He went on to achieve his Entry Level 2 Functional Skills English and Level 1 Functional Skills Maths alongside his main qualification, Certificate in Life and Living Skills at Entry 3. Rhys progressed onto a Supported Internship Programme in September 2019 based at Yeovil District Hospital where he has excelled. After his 10-week placement at the hospital, Rhys has received massive praise from all the catering team who encouraged him to register with a local agency. Yeovil District Hospital saw Rhys' potential and offered him paid employment after Christmas. Rhys now works in the kitchen preparing the breakfast and lunch trolleys for in-patients. Rhys is continuing on his course, fitting in classes between shifts.

**Rhys Bailey – Supported Internship student at Yeovil College, formerly of Fairmead School.**





**Our Preparation For Life and Work and Adulthood Programmes:** Focus on skills for independent living, employability and accessing the community.

**Progression Pathway:** These are Vocational courses and focus on progression onto further vocational study and work.

**Supported Internships:** Designed to provide students with an internship with local employers, developing skills for transition into the work place.



"Learners in the Preparation for Life and Work department are essential to events coordination at Yeovil College, not to mention the smooth running for our business operations. Every learner regularly leads and assists with challenging but rewarding tasks, including merchandise packing and recycling. In the process, every learner develops valuable social skills and knowledge of work systems."

Tim Gillet, Curriculum Area Manager,  
Foundation Learning

## Student Experience



Our Foundation Learning students claimed third place in the finals of the Regional ScrewFix Enterprise Challenge.



Sports Relief is always a highlight in the Foundation Learning student's calendar. They hosted a mass 'Danceathon' spanning the full day with at least one person dancing at any given time. The atmosphere was electric!



Supported Internship students worked on a live brief to create a logo design. Jordan developed the winning logo, which will be applied to identify the group of Supported Internship students who work and learn directly in the workplace with their employers.

## Where will you study?

Courses are based at Yeovil College, Yeovil District Hospital, local employers and within the wider community; your work and study spaces vary according to the tasks and activities involved.

## Did you know?

Foundation Learning students spend a large proportion of their time, around 250 hours, working with Business Managers from across Yeovil College, some even have industry places within the college, which often progress to Supported Internships. They regularly work on projects such as delivering post, supporting marketing activities, selling and enterprise. Foundation Learning students are present right across the college in a supportive and helpful capacity; a true business asset to all at Yeovil College.

# HAIR & BEAUTY



#WhereLearningComesToLife



## Courses

Introduction to Beauty

L1

Hairdressing & Beauty

L1

Hairdressing and Barbering

L1

Barbering

L2

Hairdressing

L2

L3

Hair & Media Makeup

L2

Beauty Therapy

L2

L3

Diploma in Theatrical, Special Effects, Hair & Media Makeup

L3

The glamorous world of Hair, Beauty Therapy and Media Make-up provides learners with many exciting and life-changing opportunities, from traveling the world, to owning a salon, to working in a luxury spa, or even working on TV and film sets. The choices are huge! Students train in our professional salon. Open to the public, The Nexus Hair and Beauty Salon allows you to work with real clients putting the skills you learn in class into practice, gaining experience in providing excellent customer service and dealing with realistic situations. Our learners offer an extensive range of on-trend, modern treatments using quality, professional product ranges such as ELEMIS, Environ and Kaeso skincare ranges and Kryolan makeup. Our tutors are some of the best in the Hair and Beauty sector, all with a huge amount of industry and trade experience. Our staff are our strength.

### Which level is right for me?

We have a course to suit everyone, at all levels and abilities. Take a look at page 16 for details regarding our study programme entry requirements.



"I feel I learn so much more at the salon than I would as a full time student. It is lovely to have a happy, nurturing environment which gives apprentices confidence in what they do."

**Maisy Miles – Level 2 Hairdressing Apprentice at Salon Fish, formerly of The Gryphon School.**







# Careers

Stylist  
 Barber  
 Receptionist  
 Hairdresser  
 Salon Owner  
 Business Owner  
 Cutting Technician  
 Senior Stylist  
 Spa Therapist  
 Nail Technician  
 Make-up Artist  
 Special effects Make-up Artist



Talented Level 3 Advanced Beauty Therapy student, Alisha Young, opened her own extremely glamorous Beauty Salon, Divine Beauty, right in the middle of lockdown. We look forward to supporting her and seeing her salon go from strength-to-strength!

Alisha Young, Level 3 Beauty Therapy student

## Student Experience



Level 3 Media Make-up student, Porcia, impressively earned her space at the World Skills competition with her interpretation of 'Tales of the Unexpected.'



Level 3 Hairdressing students showcased their skills and talents at the hairdressing competition; the theme was Avant Garde.



Hair and Beauty students visited Barcelona to learn about Spa Management in Spain, comparing industry variations.

## Where will you study?

Our students will study in our stylish, commercial Nexus Hair & Beauty Salons using and training with the highest quality industry-standard products, to provide the best learning possible.

## Did you know?

Our learners take part in national and international competitions, including World Skills. Learners work alongside industry experts and local employers and take part in tailored industry days. We also pride ourselves in working with only the best. For example, we are the only ELEMIS Educational Salon in the South West, which is an incredible accolade and true testament to the hard work and energy of the teaching team here in the beauty salon.



# HEALTH, SOCIAL CARE & EARLY YEARS

#WhereLearningComesToLife



## Courses

Introduction to Health & Early Years

L1

T Level Transition Programme in Early Years Education

L2

T Level Early Years Education

L3

Health & Social Care

L2

L3

T Level Transition Programme in Health

L2

T Level Health

L3

T Level Healthcare Science

L3

This is one of the most exciting times in our history to consider studying Health, Social Care and Early Years at Yeovil College. Not only are employment rates high, the industry is growing at a fast pace and our partnerships with key employers, including Yeovil District Hospital, enable us to equip learners with the skills and experience employers desire. We are inwardly investing a huge amount of capital into this curriculum area. Our significant investment in this area will firmly position us as market leaders and a college of choice. We will be building a dedicated, state-of-the-art hospital ward, innovative health training suites, digital dental surgery and clinical training environments.

## Which level is right for me?

We have a course to suit everyone, at all levels and abilities. Take a look at page 16 for details regarding our study programme entry requirements.



"I volunteered at the Maternity Unit at Yeovil District Hospital, which has enabled me to develop my communication skills and has given me a clear insight into my career aspiration of becoming a Midwife. My lecturers all have medical professional backgrounds which contributes to the success of their students."

Erin Finlayson - Level 3 Health & Social Care student at Yeovil College, formerly of Buckler's Mead Academy.



WEST OF ENGLAND

INSTITUTE OF  
TECHNOLOGY



# Careers

Nurse	Nursery Nurse
Paramedic	Play Co-Ordinator
Healthcare Assistant	Adult Nurse
Children's Nurse	Dental Technician
Social Worker	Dental Nurse
Midwife	Healthcare Practitioner
Occupational Therapist	
Physiotherapist	
Primary School Teacher	
Early Years Teacher	



"Make a difference! Our courses prepare you for university, work, apprenticeships and other routes into healthcare, social care, early years and the children's workforce. Be an integral part of someone's life journey and be proud of the difference you make. The Health, Social Care and Early Years team consists of lecturers who are industry professionals as well as holding teaching qualifications. Among the team are registered Social Workers, Midwives, and qualified childcare and early years professionals."

**Elle Wintersgill, Curriculum Area Manager,  
Health, Social Care and Early Years, Yeovil College**

## Student Experience



Level 3 Health, Social Care and Early Years students took a step into parenthood with the animatronic babies. Duties included changing, burping, feeding and sleepless nights!



Yeovil College was awarded £94,000 by the Edge Foundation to create a Healthcare Simulation Suite to give young people a real insight into careers in healthcare.



Early Years students visited Yeovil District Hospital Maternity Ward and suite to develop their understanding of 'conception to birth' and 'supporting mothers and babies.'

## Where will you study?

You will study in a new state-of-the-art Health and Science Centre. A newly refurbished Ashdown Building will boast sector leading, industry standard laboratories, innovative health training suites, new clinical training environments and classroom study space.

## Did you know?

We are excited to be part of a new concept, the Institute of Technology (IoT), which enhances our Health and Social Care offering. Our provision will be unrecognisable as we deliver a state-of-the-art study zone. We will lead the educational sector and will continue to develop people who are ready to progress to both employment and university. Our learners undertake comprehensive and relevant work experience as a key part of their study programme. We are also delighted to offer a new Dental Apprenticeship which will be taught in our brand new digital dental labs.



# HOSPITALITY & CATERING

#WhereLearningComesToLife



## Courses

Introduction to Professional Cookery



Introduction to employment  
in the Hospitality Industry



Professional Cookery



Advanced Professional Cookery



Food & Beverage Service



Hospitality Supervision and Leadership



The Hospitality and Catering industry is a great place to work. It is people-focused, fast-paced and creative, whether you're creating a meal, a drink, or importantly, a memorable experience. It will open doors for you. It's not mundane, it's not 9 to 5; if you want flexibility in terms of a working pattern and even work itself, then a career in hospitality could be perfect. There is so much variety, and plenty of scope to take on early responsibility if you choose to do so. Students will train in a stunning environment - our newly extended, award-winning commercial restaurant and training kitchen, Da Vinci. You will also have the opportunity to prepare and cater for large banquets, conferences and themed evenings. The new menu is outstanding!

## Which level is right for me?

We have a course to suit everyone, at all levels and abilities. Take a look at page 16 for details regarding our study programme entry requirements.



"I was very lucky to have worked in an award winning restaurant which gives me amazing daily insight into the hospitality industry. It was a privilege to win the 'Personal Development Award' at the Somerset Education Business Partnership Awards."

**Oliver Weston-Mann - former Yeovil College Hospitality Apprentice, formerly of Preston School, Distinction.**





# Careers

Chef	Patisserie Chef
Conference & Banqueting Manager	Sous Chef
Catering Manager	Head Chef
Barista	Executive Head Chef
Waiter	Butcher
Restaurant Owner	Baker
Restaurant Manager	
Cafe Owner	



"We strive to ensure all learners gain valuable employability skills to help them secure employment in their chosen career path. Our learners have extremely successful careers."

**Julie Harris, Yeovil College Lecturer & Apprenticeship Assessor**

## Student Experience



Hospitality students travelled to London to visit award winning restaurants, Camden Market, the London Eye and many 'food based' visitor attractions.



Westfield Academy Year 11 students joined us at the Da Vinci Restaurant where our students prepared, cooked and shared an elaborate three course meal plus a mocktail and canapé reception.



Level 2 Commis Chef Apprentice, Gary West, had the unique opportunity to showcase his skills at the Brit Awards. What a brilliant experience!

## Where will you study?

Our students study in a fully equipped, industry-standard restaurant kitchen, training kitchen and in our award-winning Da Vinci restaurant, working with industry professionals to run daily service.

## Did you know?

We boast a beautiful, modern fully operational restaurant and kitchen where our students will support daily lunch service and themed evenings for both internal and external customers. The newly refurbished Da Vinci Restaurant was awarded the prestigious title of 'Stars of Somerset' in the Food and Drink Category in 2020.





# MOTOR VEHICLE



#WhereLearningComesToLife



## Courses

Light Vehicle Maintenance & Repair

Y1

Light Vehicle Maintenance & Repair

Y2

Light Vehicle Maintenance & Repair

Y3

If cars are your passion, then take your foot off the brake because a career within Motor Vehicle is within easy reach. Join our inspirational and creative Motor Vehicle team. We work in partnership with some of the best employers in the region including Nissan and Ariel Motor Company to give you the education, skills and hands-on experience you need to stand out from the crowd. We have a brand new dedicated Motor Vehicle Centre on campus boasting all the latest technology and equipment to guarantee superior, practical and hands-on experience.



"Connor first started his journey with us at Yeovil College whilst still at school. During year 11, Connor attended the college to study Motor Vehicle on Friday afternoons. He showed a natural talent for Motor Vehicle Engineering and through his hard work, secured himself a place on the full time course when he had finished Year 11. Connor continued to perform at a very high standard on his full time course, developing his technician skills and working to improve his Maths and English. His hard work was rewarded further when he applied and successfully gained employment as a Vehicle Technician Apprentice at FJ Chalke."

**Connor McGinty - Motor Vehicle student at Yeovil College, formerly of Westfield Academy.**

## Which level is right for me?

We have a course to suit everyone, at all levels and abilities. Take a look at page 16 for details regarding our study programme entry requirements.





# Careers

Light Vehicle Service Technician  
Service Administrator  
Diagnostic Technician  
Aftersales Manager  
Customer Service Advisor  
Parts Advisor  
Fast Fit Technician  
Sales Manager  
Vehicle Repair Centre Owner



"Yeovil College is supporting us to develop our apprentice. The communication and support offered by the college has been excellent and our apprentice and company are benefitting as a result of the training being delivered by the college."

**Scott Young, Service Manager, Vale Motors**

## Student Experience



We are proud to celebrate the ongoing success of our students. This group of future Motor Mechanics officially completed their Gateway 1 Certificate in Motor Mechanics.



Motor Vehicle Apprentice, Jack McGee, who works for Ariel Motor Ltd, helped prepare the actual Ariel Atom which was tested on the Top Gear track. It is also a regular feature at our information evenings.



Motor Vehicle students supported Yeovil College's charity day to raise money for Cancer Research UK through a sponsored car wash.

## Where will you study?

Our new Motor Vehicle Centre will be your base. It is a top-of-the-range, industry standard workshop fitted with four vehicle ramps, MOT test lane with brake roller tester, diagnostic test equipment, air conditioning service unit and electric vehicle tooling.

## Did you know?

Our facilities are our strength. We have a large, purpose-built, ultra-modern, workshop, which was opened in February 2018. We work with many local and regional employers who support us with innovative kit and technology, vehicles and industry expertise, including our valued partners Nissan Wellington. Our staff are all time-served technicians with a vast range of knowledge in the Motor Vehicle repair sector. Knowledge that they continue to build on with regular professional development. They are passionate about sharing their skills with the next generation.

# PERFORMING ARTS



#WhereLearningComesToLife



## Courses

Performing Arts



If you have a passion for the performing arts and the drive to succeed then this is the course for you!

Our award-winning Performing Arts course is the only one in Somerset delivered by a professional theatre company, Wassail Theatre Company.

You will become a member of Wassail's company for two years, during which time a team of performing arts professionals will help you learn new on and off-stage skills in theatre, circus, singing and dance.

Former Yeovil College Performing Arts students have pursued careers as performers, producers, technicians, journalists and teachers, amongst others.



"My time at Yeovil College was the best. My confidence built up massively - I'd never sang in front of an audience and by the end of my time I had a lead role in a musical with a sell-out audience. I've been shown over and over again that I can be good at different things if I'm willing to give it a go. This has set me up perfectly for the next leg of my career - into the world of teaching, which was inspired by my tutors. Genuinely, if I could start over and go back to the start of the 1st year of my course, relive every unique and exciting opportunity and experience it over again, I definitely would!"

**Hannah Barnes – former Yeovil College Performing Arts student, Triple Distinction.**

## Which level is right for me?

We have a course to suit everyone, at all levels and abilities. Take a look at page 16 for details regarding our study programme entry requirements.



**Lisha Allen,**

formerly of The Park School,  
Triple D\* in Level 3 Performing Arts





# Careers

Director	Teacher
Writer	Actor
Designer	Singer
Producer	Dancer
Stage Manager	Circus Performer
Production Manager	
Venue Manager	
Choreographer	

"There are many exciting developments happening within the Performing Arts department, including the development of a Theatre Academy in partnership with local professional theatre company, Wassail. This will bring unparalleled experiences to our students, which will include creating lots of live performances, supporting Wassail's professional shows, and getting involved with the arts across Somerset. We have recognised that Performing Arts requires a specialist approach and we have lined up leading local professionals to deliver each aspect of our programme. This gives our students the edge. Students will perform on campus and in the community on a regular basis. They'll take several trips to different professional settings throughout the year and will be inspired and motivated to be all that they can be."

**Andy Holmes, Curriculum Area Manager for Performing Arts, Yeovil College.**

## Student Experience



Performing Arts students performed 'Rent the Musical.' In just 8 weeks, they mastered scripts and music, tackling taboo and controversial subjects, to deliver the performance of their life.



Performing Arts student, Freddie De Ronne, was cast in the Golden Globe smash hit '1917', alongside stars such as Benedict Cumberbatch. He said: "Taking part in 1917 was the best experience of my life. It was really good to understand what goes into big budget films."



Performing Arts students visited The Octagon Theatre to watch a performance by Motion House, who then delivered an exclusive masterclass to our students.

## Where will you study?

The stage will literally be your classroom! You will work mostly within our studio and main hall, although you will also visit a number of community and professional settings as you are encouraged to think outside of the box! As well as joining Wassail's company, you will work with a range of other professionals throughout the year.

## Did you know?

Our Performing Arts partner Wassail is Somerset's Theatre Company. Wassail is regularly funded by Arts Council England to create original performances for audiences all over Somerset and the south-west. Their shows have included tours to pubs, village halls, churches, shops and people's houses as well as 'site-specific' shows in nature reserves and across the Somerset Levels. Wassail's associate artists and fellow Performing Arts department members include international circus-theatre company Pirates of the Carabina and the acclaimed Lissy Jane Vocal Coach.



# PROTECTIVE SERVICES



#WhereLearningComesToLife



## Courses

Public Services



Uniformed Services



Uniformed Protective Services



HND Policing



Whether your focus is on joining the military services in the British Army, Royal Air Force or Royal Navy and Royal Marines, or whether you'd prefer a rewarding career in the Police Service, Fire Service, Paramedic or Prison Service, we have a wide range of courses to choose from. You will develop strong communication and team working skills, as well as enhancing your physical fitness, which are all vital to lead a successful career in uniformed or public services. You will complete work experience which will give you a real insight into life in the Protective Services. You will spend a week in the life of a Royal Marine, a week in the life of the British Army and also visit Avon and Somerset Police Headquarters and experience what it would be like to be a firefighter.

## Which level is right for me?

We have a course to suit everyone, at all levels and abilities. Take a look at page 16 for details regarding our study programme entry requirements.



"My lecturer really motivated me to be where I am today. He never lost faith in me and continuously pushed me. The course was very varied and my lecturers always made it fun. My career journey has been incredible and I have just accepted a role within the Dorset Police Service."

**Chloe Wellington – Former Level 3 Uniformed Public Services student at Yeovil College, formerly of Preston School, Triple Distinction\*.**





# Careers

Police Officer	Royal Engineer
Firefighter	Weapon Specialist
Prison Officer	Submariner
Paramedic	Royal Marine
Infantry Soldier	Firearms Specialist
Combat Medic	Dog Handler
Royal Military Police	Specialist Rescue Team
Criminal Investigator	
Pilot	



"Yeovil College is the best college at which to study if you want a successful career in the military. They have first-hand experience of military life, and prepare students well for this type of career."

**Lsgt Rob Burnell Coldstream Guards.**

## Student Experience



Protective Services students visited Weymouth Fire Station and were put through their paces with a hands-on experience of what it is like to be a Firefighter.



Students visited Belgium to take a tour around iconic battlefields and war memorials, including Passchendaele, Devonshire Trenches, Battle of the Somme and Vimy Ridge.



Protective Services students visited RNAS Yeovilton's Air Traffic Control Centre to gain an insight into the industry and a chance to talk to some of the true industry experts.

## Where will you study?

You will study in the classroom using a combination of discussion, theory lessons and predestinations. You also spend time in the sports hall doing fitness and sports and undertake teamwork sessions outdoors.

## Did you know?

You will take part in a huge range of industry visits, workshops and mock interviews, as well as developing leadership and personal skills. Our tutors are a real strength. They all have Protective Services backgrounds, which enables them to bring the theory to life and provide our students with the right level of confidence, skills and knowledge to move into a successful career within the protective services industries.



# SPORTS, COACHING & FITNESS



#WhereLearningComesToLife



## Courses

Sport



Instructing Exercise & Fitness



Personal Training



YTFC Elite Player Development Programme (EPDP)



Sport and Exercise Sciences



Strength and Conditioning



Sports Coaching and PE



Yeovil Town Football Club (YTFC) Coaching and Physical Activity



When you combine your studies with your interest and passion for sport, great things happen! Whether it is your aim to develop your knowledge of sport, exercise and coaching, or nurture your talent as a sports performer, Yeovil College will help you stand out from the crowd. Our established partnership with Yeovil Town Football Club could provide an ambitious young footballer with entry onto our Elite Player Development Programme. Alternatively, Yeovil College Sport have a proven record of supporting applicants progressing into UK and international universities, as well as gaining employment with national sports providers.

### Which level is right for me?

We have a course to suit everyone, at all levels and abilities. Take a look at page 16 for details regarding our study programme entry requirements.



"I am really happy with my results and am very excited to start studying Sports Management at the University of Bath. I have loved my time at Yeovil College."

**Ben Pounder – Studied Level 3 Sport at Yeovil College, formerly of Preston School, Triple Distinction\*.**





# Careers

Sports Coach  
PE Teacher  
Professional Athlete  
Sports Development Officer  
Performance Analyst  
Physiotherapist  
Event Management  
Fitness Instructor  
Personal Trainer  
Sports Therapist  
Sports Massage Therapist  
Footballer



"The course gave me underpinning knowledge that has provided me with a great foundation for progression in professional football. The lecturers gave me great advice in the progression of my career."

**Jordan Storey, Preston North End FC**

## Student Experience



Sports students enjoyed a taster day at the University of South Wales where they had the opportunity to develop interpersonal skills and confidence, whilst enjoying playing rugby.



Yeovil College students represented both the college and the South West in cross country running at the AOC National Championships.



Sports students took the role of sports leaders and coaches as many local primary schools joined us to enjoy a range of sporting activities. This developed their skills as leaders and Sports teachers of the future.

## Where will you study?

You will predominantly study in Kingston, however our sports hall, fitness centre, sports pitches, athletics track and YTFC's 4G pitch will also act as your classroom.

## Did you know?

We are Yeovil Town Football Club's only educational partner, which means that whilst our students complete their academic studies on site at Yeovil College, they will spend a significant proportion of their time training and playing football at Huish park, supported and encouraged by First Team Manager, Darren Sarll.





# TRAVEL & TOURISM



#WhereLearningComesToLife



## Courses

Travel & Tourism



HND Travel & Tourism



The Travel and Tourism industry is one of the world's largest and most exciting industries with 1 in every 10 jobs on the planet being linked to Travel and Tourism.

Travel and Tourism is perfect if you are adventurous, outgoing and have a keen interest in working in a people-focused environment. Our tutors have direct experience in the industry, meaning you benefit from specialist industry knowledge and you will gain first-hand experience by taking part in activities such as Cabin Crew training and the travel market held at London Excel Centre as well as visits to many tourist attractions and holiday destinations.

### Which level is right for me?

We have a course to suit everyone, at all levels and abilities. Take a look at page 16 for details regarding our study programme entry requirements.



"My time at Yeovil College has been the best experience I could ask for. Throughout the three years I have accomplished so much, which wouldn't have been possible without the support of the lecturers and tutors who have helped me to become the person I am today. After one year of studying at the college, I was inspired to take up a Fitness Instructing course on top of Travel and Tourism, so the college supported me by creating a specialised timetable. Yeovil College pushed me to gain the best possible grades to make the dream of going to university become a reality and I gained an unconditional offer to study Tourism Management at Bournemouth University."

**Nadine Diment –Level 3 Travel and Tourism student at Yeovil College, formerly of Ansford Academy, triple Distinction\*.**





# Careers

Cabin Crew  
 Holiday Representative  
 Retail Travel Agent  
 Holiday Entertainer  
 Tour Operator  
 Tourism Management  
 Events Manager  
 Cruise Ship Employee  
 Hotel Industry  
 Hospitality Industry



"The teaching was great and gave us all the information in order to complete the qualification and helped me to move on to my place at University. I really enjoyed the trips as they gave us the opportunity to see the industry at work."

**Yeovil College Travel & Tourism Student**

## Student Experience



Our Travel and Tourism students took a trip to the World Travel Market in London and took part in a student conference meeting industry experts and recruiters.



Travel and Tourism students planned, organised and executed a trip to London organising visits, transport and the itinerary for the day. The London Dungeons and ice-skating were firm favourites.



Visiting speaker and industry expert, Hayley McDonough, delivered a masterclass to our Travel and Tourism students about careers in the cruise ship industry.

## Where will you study?

You will predominantly be based in the Kingston building where the classroom is often transformed into a mini aeroplane, however you will be involved in many self organised trips, visits and work placements enabling you to put your learning into practice.

## Did you know?

Our teaching team are experts in their field. The newest member of our team, Terri, worked in aviation for over a decade, most of which was spent working as a Customer Service Manager for British Airways. Her role allowed her to experience many different cultures whilst flying around the world working as a Senior Cabin Crew member onboard the aircraft. She also spent time developing and coordinating the work experience programme for aspiring cabin crew from Year 10s through to college level. As part of our Travel & Tourism programmes, students have explored culture and diversity in exotic locations like Dubai, Morocco and Sri Lanka.

Tel: 01935 423921 | Email: [enrol@yeovil.ac.uk](mailto:enrol@yeovil.ac.uk) | 67



"I chose to study Uniformed Public Services at Yeovil College as a friend recommended it to me. At the time I was unsure about what I wanted to do with my future, but this course opened up a variety of career paths. I enjoyed the range of topics we learned about and the emphasis on teamwork that the course offers. I would definitely recommend this course to anyone, whether they already have their heart set on joining the Military, Police, Fire Service or are unsure on what their next steps could be, like I was."

**Harrison Haynes – Level 3 Uniformed Public Services student at Yeovil College, formerly of The Gryphon School, triple Distinction\*.**



"When I first started my Level 1 Diploma in Health, Social Care and Early Years, I was unsure as to where I would go in the future however with visits from many different industries within the Health Care sector, I gained more information about what I might want to do and what qualifications are required. This has led me to decide to do my Level 2 in Health and Social Care next year. Over the past eight months I've developed more knowledge and learnt in a more comfortable environment as there were less people in a class, this also meant I got more 1-1 help and support from staff. I have really enjoyed College and the Level 1 Diploma, I would definitely recommend it."

**Bethany Southern – Level 1 Health, Care & Early Years student at Yeovil College, formerly of Westfield Academy.**



"I was a Yeovil College student, studying Uniformed Public Services from 2014-16. I am now in my final year at the University of South Wales, to become a trainee Solicitor upon graduation in July! Thank you to Yeovil College for pushing me to achieve things that I didn't think were possible."

**Mellissa Wallbridge – Former Level 3 Uniformed Public Services student at Yeovil College, formerly of Stanchester Academy, triple Distinction\*.**



"I have had the opportunity to complete my UEFA B Coaching License and become an Academy Coach at YTFC. I am really enjoying both my work at YTFC and Yeovil College University Centre. I currently work with a variety of ages at the academy, but have recently been given the aged 10s to lead. I am looking forward to the future at Yeovil Town FC."

**Matthew Percival – HND Sport student at Yeovil College University Centre supported by a placement at Yeovil Town Football Club (YTFC).**



# APPRENTICESHIPS

At Yeovil College we offer a huge variety of Apprenticeships suitable for any age of employee at any level within a huge range of industries.



## **CALLUM COOK, LEVEL 3 MARKETING APPRENTICE, FORMERLY OF KING ARTHUR'S COMMUNITY SCHOOL.**

"I have really enjoyed my time as an Apprentice. I feel like the Apprenticeship route is a perfect blend of working and learning. I have had a really positive experience with such great people beside me, the support has been great. I can genuinely say that it has fully prepared me for work, far better than any other educational route would have."



## What is an Apprenticeship?

An apprenticeship is a real job, with hands-on experience, a salary and the chance to train while you work. You're treated just like all the other employees, with a contract of employment and holiday entitlement.

.....

### What are the benefits of an apprenticeship?

- Earn while you develop your knowledge and skills
- Learn job specific and transferable skills
- Gain nationally recognised qualifications
- Advance in your chosen career
- Advance to higher level apprenticeships
- Increase your future earning potential
- No qualification fees.

### What training will I have?

- Hands-on work experience and training in all aspects of the job
- At least 20% of your normal working hours will be spent in 'off-the-job' training
- Some of your learning may be delivered at Yeovil College, in the form of masterclasses, day release or block release
- Assessments and reviews in the workplace by your Yeovil College Assessor
- Functional Skills in English & Maths where required.

### Am I eligible for an apprenticeship?

You are eligible if:

- You are aged 16 or over
- You live and have the right to work in England
- You are not in full time education
- You do not already hold an equivalent or higher level qualification in the subject of your apprenticeship.

### How can I find apprenticeship vacancies?

- Find and apply for apprenticeship vacancies online at [www.gov.uk/apply-apprenticeship](http://www.gov.uk/apply-apprenticeship)
- Book a 1:1 appointment with our Apprenticeship Co-ordinators
- Visit <https://www.yeovil.ac.uk/apprenticeships/current-vacancies/>

### Next steps?

Contact us on 01935 845392 or [apprenticeships@yeovil.ac.uk](mailto:apprenticeships@yeovil.ac.uk).

.....

**OLD M'LL**  
Financial experts, feeding ambitions

**yarlington**  
PROPERTY SOLUTIONS

**SYCAMORE**

**Gregory**  
Delivering winners

**micron**

**LEONARDO**

**CRIMSON**

**OXLEY SPORTS CENTRE**

**NORCO**  
COMPOSITE ED & GEL

**Yeovil Hospital Healthcare**

**LOCADO**

**Hunts ACCOUNTANTS**

**SCREWFIX**

**C&D South West**

**TODS AEROSPACE**  
A Lockheed Martin Company

**Honeywell**

**Numatic INTERNATIONAL**

**MATRAVERS ENGINEERING LTD**

**Dorset County Council**

**harmony**

**First 4 Repairs**  
"The service you can trust"

**JONES**  
Food and Drink

**wessex FIRE & SECURITY**

**FJ Chalke Group**

**Pittards**  
WORLD CLASS LEATHER

**led**

**wessex ELECTRICALS**

**Summer Lodge**  
Golf and Country Club



"My favourite part of being a Yeovil College Apprentice is the friendly environment and how helpful all my tutors were. I had to re-take my Maths & ICT and I had a lot of support from the people around me. They made me feel like I could achieve anything."

Libby Boobyer - Yeovil College Level 2 Business Administration Apprentice at Jones Building Group, formerly of Buckler's Mead School.

## Student Experience



Yeovil College Apprentice Emily Birkett, employed by Outpost won the Apprentice of the Year Award at the Dorset Business Awards. "Emily joined us as an apprentice at just 16 years old. Seeing her skills, professional attitude and confidence develop has been an incredible source of inspiration," said Ian Fellows.



Our Apprentices take part in a variety of masterclasses delivered by experts from within their industry and this is often quoted as a strength by our apprentices, with the majority saying that this enhances their college experience.



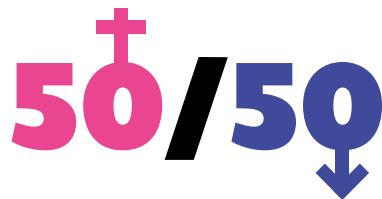
We work with over 400 employers and have strong relationships with each of them. Many of these employers support our annual apprenticeship job fair. We are lucky to operate in a community where local businesses are keen to share knowledge and support the future generation in achieving their career goals.

## APPRENTICESHIP FACTS AND MYTHS

There were 22,500 level 6 and 7 Apprenticeship starts in 2018/19.



The number of women and men starting apprenticeships in 2018/19 was almost equal; 50.1% women and 49.9% men.



### MYTH

"I have a disability, apprenticeships aren't for me."

### RESPONSE

Wrong! 12% of apprenticeship starts in 2018/19 were learners with learning difficulties/disabilities and this number has been increasing since 2011/12.



### MYTH

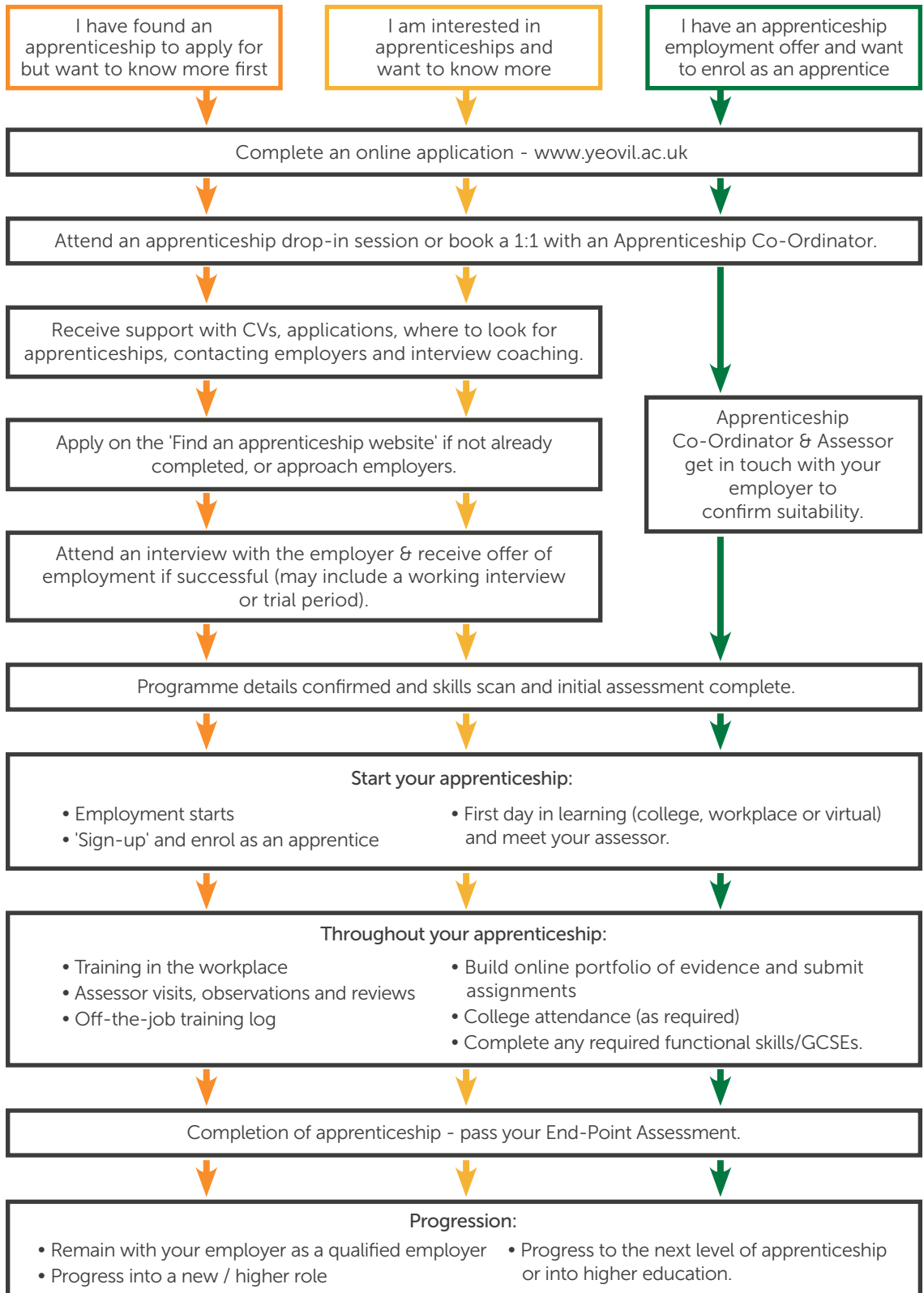
"I've missed out on starting an apprenticeship this year so I have to wait until next September."

### RESPONSE

This is true in some cases, but you can enrol on many apprenticeship programmes throughout the academic year.

**ENROL NOW!**

# The Yeovil College Apprenticeship Journey





# Apprenticeships Levels

Name	Level	Equivalent Level
Intermediate	2	5 GCSE passes at grade 9-4 (A*-C)
Advanced	3	2 x A Level passes/ Level 3 Diploma/ International Baccalaureate
Higher	4, 5, 6 & 7	Foundation Degree and above
Degree	6 & 7	Bachelor's or Master's Degree

.....

## What can I expect from my employer?

Different employers may offer different benefits and conditions, but as a minimum all apprentices will receive:

- On and off-the-job training in all aspects of the job and support with your apprenticeship training
- A contract of employment
- Paid annual leave entitlement (at least the statutory minimum level)
- The statutory minimum length of rest breaks
- Statutory sick pay
- Maternity, paternity and adoption pay and leave
- The National Minimum Wage for apprentices (as a minimum).

## What is the national minimum wage for an Apprentice?

The national minimum wage rate for an apprentice changes depending upon the age of the apprentice. For the most up-to-date information, please refer to: [www.gov.uk/national-minimum-wage-rates](http://www.gov.uk/national-minimum-wage-rates).

## How many hours per week will I work as an Apprentice?

You will usually work between 30 and 40 hours per week as an apprentice. If you are under 18, you can only legally work a maximum of 8 hours per day or 40 hours per week.

## What can I expect from Yeovil College throughout my Apprenticeship?

- An individual learning plan
- A dedicated assessor who will support you throughout your apprenticeship
- Regular progress reviews
- Off-the-job-training in college or in the workplace
- Delivery and support with Functional Skills and/or GCSE
- A commitment statement, which is signed by the college, the employer and apprentice.

12

Months minimum length



## Business & Professional Services

- Assistant Accountant & Professional Accounting/Taxation Technician
- Business Administration
- Customer Service - Practitioner & Specialist
- Team Leader/Supervisor
- Operations/Departmental Manager
- Marketing
- Retailer & Retail Team Leader
- Learning & Skills Teacher
- Learning Mentor
- Assessor/Coach



## Construction

- Bricklayer
- Carpentry & Joinery (Site & Architectural)
- Furniture Manufacturer
- Electrician (Installation & Maintenance)
- Fire Emergency & Security Systems Technicians
- Property Maintenance Operations
- Plumbing & Domestic Heating Technician



## Creative Industries

- Junior Content Producer
- Lean Manufacturing Operative
- Print Technician



## Engineering

- Engineering Technician - Machinist - Advanced Manufacturing Engineering
- Engineering Technician - Aerospace Manufacturing Fitter
- Composite Technician
- Engineering Technician - Mechatronics Maintenance Technician
- Metal Fabricator
- Engineering Technician - Product Design
- Engineering Technician - Technical Support
- Engineering Technician - Tool Technician
- General Welder (Arc Processes)
- Manufacturing Engineer (Degree)
- Aerospace Engineer (Degree)
- Engineering Manufacturing Technician



## Hair & Beauty

- Hair Professional (Barbering & Hairdressing options)



## Health, Care & Early Years

- Early Years Practitioner
- Children, Young People & Families Practitioner, Including Residential Childcare
- Early Years Educator
- Adult Care & Lead Adult Care
- Health Assistant Practitioner
- Senior Healthcare Support Worker
- Teaching Assistant
- Dental Nursing - Principles & Practice
- Lead Practitioner In Adult Care



## Hospitality

- Production Chef
- Commis Chef
- Hospitality Supervisor
- Hospitality Team Member



## IT

- Infrastructure Technician
- Network Engineer
- Software Developer
- Infrastructure Technician



## Motor Vehicle

- Motor Vehicle Service & Maintenance Technician



## Sport & Travel

- Leisure Team Member
- Leisure Duty Manager
- Personal Trainer
- Community Sport & Health Officer
- Sports Teaching Assistant
- Community Activator Coach
- Travel Consultant

**WELCOME**  
**TO THE**  
**NEXT *T* LEVEL**

**WELCOME**  
**TO THE**  
**NEXT *T* LEVEL**

**WELCOME**  
**TO THE**  
**NEXT *T* LEVEL**



# T LEVELS HAVE ARRIVED

We are delighted to announce that Yeovil College has been selected to deliver the brand new T Level qualifications from September 2021. Along with only 64 other providers in the UK, we will deliver this new concept in learning and are excited to offer this fantastic learning opportunity to our community.

T Levels are a new qualification designed to give young people a head start towards the future career they want. T Levels follow GCSEs and are equivalent to 3 A Levels. The two year qualification brings the classroom and work placement together, on a course designed with the support of employers and businesses. T Levels take two years of full time study, five days per week. Around 80% of your time will be in the classroom and 20% in the workplace, suiting those who feel ready to join the world of work.

With the introduction of T Levels, the government aims not only to create a more skilled and able workforce in the future but also to streamline technical education and prioritise skills that sit within 15 industry routes.

## T LEVEL ROUTES AVAILABLE FROM SEPTEMBER 2021:

- ↗ Childcare
- ↗ Science
- ↗ Education
- ↗ Digital
- ↗ Health



## WORK PLACEMENT

Undertaking a substantial, mandatory work placement is a key driver of success of the new T Level programme. All students will complete a minimum of 315 hours (around 45 days) to help confirm their career pathway, contextualise new skills and knowledge, and develop attitudes and behaviours needed in the sector specific workplace. Many students have even met their future employers whilst on placement.

## ARE T LEVELS RIGHT FOR ME?

T Levels are ideal if you have completed your GCSEs and want to get the knowledge and experience needed to secure a skilled job.

Each T Level route contains the following components:

- ↗ A Technical Qualification. (The main, classroom-based element).
- ↗ An Industry Placement running for a minimum of 315 hours. (45 days).
- ↗ English, Maths & Digital provision for those who have not achieved a grade 4;
- ↗ Any licence to practice for that specific occupation;
- ↗ Enrichment and tutorial time.

# OUR T LEVEL OFFER

## **T LEVEL EARLY YEARS EDUCATION**

The T Level in Early Years Education will provide learners with the knowledge, skills and behaviours needed to progress into skilled employment or higher-level technical training or university level study in the Education and Childcare sector. This occupational specific qualification meets the Early Years Educator Criteria and has been recognised and approved by the Department for Education. Holders of this qualification can be counted in EYFS staff child ratios. Learners will experience both classroom-based and practical learning through industry placement. The Technical Qualification is the main classroom-based element of the course and consists of two components: The 'Core' provides students with the knowledge that underpins the industry including safeguarding, supporting education, special educational needs and reflective practice.

**English and Maths:** Minimum of a grade 4 in GCSE English and Maths.

**Entry Requirements:** GCSE Grade 4-9 profile.

**Industry Placement:** 715 hours across 2 years.

## **T LEVEL HEALTH (SPECIALISING IN NURSING, MIDWIFERY OR PARAMEDICS)**

The T Level in Health provides learners with the knowledge, skills and behaviours needed to progress into skilled higher-level technical training or university level study in the Health sector. The core knowledge and understanding will be assessed through an examination and core skills through a practical employer-set project. The occupational qualification will enable learners to specialise in nursing or midwifery. All learners will undertake a mandatory industry placement during the 2-year study programme that lasts for approximately 45 days.

**English and Maths:** Minimum of a grade 4 in both GCSE English and Maths.

**Entry Requirements:** 315 hours across 2 years.

**Industry Placement:** 715 hours across 2 years.

## **T LEVEL TRANSITION PROGRAMME IN EARLY YEARS EDUCATION**

Learners not yet ready to undertake study at Level 3 will undertake a T Level Transition Programme in Early Years Education alongside English and/or Maths to enable progression to the T Level. The T Level Transition Programme in Early Years Education will provide learners with the knowledge, skills and behaviours needed to progress onto the Level 3 T Level in the Education and Childcare sector.

**English and Maths:** English and/or maths will also be studied.

**Entry Requirements:** GCSE grade 3 and below profile.

**Work Experience:** Minimum of 35 hours.

## **T LEVEL HEALTHCARE SCIENCE**

The T Level in Healthcare Science provides learners with the knowledge, skills and behaviours needed to progress into skilled employment or higher-level technical training or study in the Health Science sector. The core knowledge and understanding will be assessed through an examination and core skills through a practical employer-set project. The occupational qualification will enable learners to specialise in Healthcare Science and progress to a higher technical qualification, university or an apprenticeship. There are a range of areas that you might work within, such as a pathology laboratory (e.g. processing samples of blood, cells or tissues), a cardiology department (e.g. taking readings of a patient's heart), a respiratory department (e.g. measuring a patient's breathing) or an audiology department (e.g. helping to identify and assess hearing and balance dysfunction). Some roles will have a specific job title such as a Phlebotomist (e.g. taking blood), a Cardiographer (e.g. monitoring the heart) or New-born Hearing Screener (e.g. assessing the hearing in new-born babies).

**English and Maths:** Minimum of a grade 4 in both GCSE English and Maths.

**Entry Requirements:** GCSE grade 4-9 profile.

**Industry Placement:** 315 hours across 2 years.

## **T LEVEL TRANSITION PROGRAMME IN HEALTH**

Learners not yet ready to undertake study at Level 3 will undertake a T Level Transition Programme in Health alongside English and/or Maths to enable progression to the T Level. Learners wanting to progress onto the T Level in Health will be prepared with the knowledge, skills and behaviours needed to be successful at Level 3.

**English and Maths:** English and/or Maths will also be studied.

**Entry Requirements:** GCSE grade 3 and below profile.

**Work Experience:** Minimum of 35 hours.

## **T LEVEL SCIENCE**

The T Level in Science will provide learners with the knowledge, skills and behaviours needed to progress into skilled employment or higher-level technical training or study in the Science sector. The core knowledge and understanding will be assessed through an examination and core skills through a practical employer-set project. The core content will apply to a range of industries that employ Laboratory Scientists such as scientific and clinical practice, core science concepts, safety and environmental regulations in the science sector, managing information and data within science. Learners will progress to an apprenticeship, higher technical qualification, university or employment.

**English and Maths:** Minimum of a grade 4 in both GCSE English and Maths.

**Entry Requirements:** GCSE grade 4-9 profile.

**Industry Placement:** 315 hours across 2 years.

## **T LEVEL TRANSITION PROGRAMME IN SCIENCE**

Learners not yet ready to undertake study at Level 3 will undertake a T Level Transition Programme in Science alongside English and/or Maths to enable progression to the T Level. The core content will apply to a range of industries that employ Laboratory Scientists such as scientific and clinical practice, core science concepts, safety and environmental regulations in the science sector, managing information and data within science.

**English and Maths:** English and/or Maths will also be studied.

**Entry Requirements:** GCSE grade 3 and below profile.

**Work Experience:** Minimum of 35 hours.



**20%**  
**WORK**  
*WORK*  
**WORK**  
*WORK*  
**WORK**



## **T LEVEL COMPUTING (DIGITAL DESIGN, PRODUCTION AND DEVELOPMENT)**

The T Level in Digital will provide learners with the knowledge, skills and behaviours needed to progress into skilled employment or higher-level technical training or study in the Digital sector. The core knowledge and understanding will be assessed through an examination and core skills through a practical employer-set project. Learners will follow one occupational pathway, either Digital Design, Production and Development, or Digital Support or Data Technician.

**English and Maths:** Minimum of a grade 4 in both GCSE English and Maths.

**Entry Requirements:** GCSE grade 4-9 profile.

**Industry Placement:** 315 hours across 2 years.

## **T LEVEL DIGITAL BUSINESS**

The T Level in Digital Business will provide learners with the knowledge, skills and behaviours needed to progress into skilled employment or higher-level technical training or study in the Business sector. The core knowledge and understanding will be assessed through an examination and core skills through a practical employer-set project.

**English and Maths:** Minimum of a grade 4 in both GCSE English and Maths.

**Entry Requirements:** GCSE grade 4-9 profile.

**Industry Placement:** 315 hours across 2 years.

## **T LEVEL TRANSITION PROGRAMME IN COMPUTING (DIGITAL DESIGN, PRODUCTION AND DEVELOPMENT)**

Learners not yet ready to undertake study at Level 3 will undertake a T Level Transition Programme in Digital alongside English and/or maths to enable progression to the T Level. The core content will apply to a range of industries that employ individuals within the range of Digital sectors.

**English and Maths:** English and/or Maths will also be studied.

**Entry Requirements:** GCSE grade 3 and below profile.

**Work Experience:** Minimum of 35 hours.

## **T LEVEL TRANSITION PROGRAMME IN DIGITAL BUSINESS**

Learners not yet ready to undertake study at Level 3 will undertake a T Level Transition Programme in Business alongside English and/or maths to enable progression to the T Level. The core content will apply to a range of industries that employ individuals in the Digital Business sector.

**English and Maths:** English and/or Maths will also be studied.

**Entry Requirements:** GCSE grade 3 and below profile.

**Work Experience:** Minimum of 35 hours.

# **FAQS**

## **HOW LONG IS THE INDUSTRY PLACEMENT?**

An industry placement lasts around 45 days (minimum of 315 hours).

## **CAN I GO TO UNIVERSITY AFTER A T LEVEL?**

Yes. T Levels help you to become work ready, but you can also continue studying with a higher apprenticeship or a degree.

## **DO T LEVELS ATTRACT UCAS POINTS?**

Yes. A T Level Distinction\* is worth the same as 3 A Levels at A\* and will be recognised by universities.

## **WILL THEY BE RECOGNISED BY EMPLOYERS?**

Yes. T Levels have been designed by a collaborative partnership of education institutions and employers, so that the content meets the needs of industry and prepares you for work.



# ENGLISH AND MATHS

Great English and Maths skills are essential in all careers. At Yeovil College, both English and Maths will form a central part of your study programme if you are aged 16-18 and have not yet achieved a grade 4 (formerly a grade C). We believe that achieving such skills are critical to your future success and you will continue to develop competence and confidence levels.

If you have a grade 3 or below, you will undertake a one year Functional Skills study programme. This will give you the opportunity to gain a widely recognised qualification and take a step towards achieving a grade 4 or higher at GCSE.

## Why are English and Maths critical to your career?

- + Beauticians need to be able to calculate prices and order stock;
- + Plumbers must be able to price up jobs and buy materials;
- + Health and Social Care employees need to communicate effectively with patients and people within their care;
- + Catering staff must be able to check stock levels and re-order food and drink;
- + Engineers need to calculate drawings accurately.



# ESOL

## FREE ENGLISH COURSES FOR SPEAKERS OF OTHER LANGUAGES

If English is not your first language and you would like to improve your speaking, listening, reading and writing of the English language, then we have the perfect FREE ESOL course for you.\*

Our teachers are friendly, approachable and supportive and will help you to gain a nationally recognised qualification as you progress with your English skills.

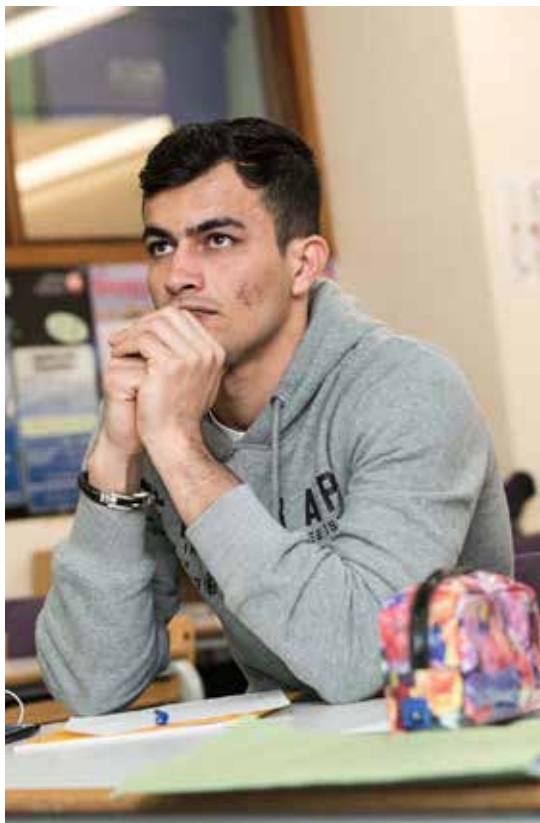
### Improving your English will help you to:

- Get a better job and career;
- Achieve a qualification;
- Allow you to help your children or grandchildren with their homework;
- Progress to further college courses and potentially to higher education qualifications.

Following your application we will invite you to an assessment to find out which course will best suit your needs. To find out more contact our Student & Customer Services Team on:

- **01935 423921**
- **[enrol@yeovil.ac.uk](mailto:enrol@yeovil.ac.uk)**

\* Subject to meeting eligibility criteria



# THE YEOVIL COLLEGE UNIVERSITY CENTRE

Yeovil College  
University  
Centre

At Yeovil College, we pride ourselves on delivering a range of practical and academic qualifications in the heart of Yeovil to support you with the next steps on your career journey. Our University Centre offers you a real alternative to travelling further afield where you can study degree-level qualifications within a dedicated setting. All qualifications have been designed with local employers and industry requirements in mind.

When you successfully complete your Level 3 course at Yeovil College you will have the opportunity to apply for one of our degree-level programmes within the Yeovil College University Centre. Although you are studying at the Yeovil College University Centre, your final qualification will be awarded by one of our prestigious partners. You will receive your qualification in the same way as others who have physically studied at one of our partner organisations, with the benefit of staying local.

## Why study with us?

- Achieve a university equivalent qualification;
- We have strong partners in the University of Plymouth, the University of Gloucestershire and Pearson Education;
- Our qualifications are practical and vocationally focused;
- All programmes are aligned to the local employment market;
- Benefit from local employer links through Yeovil College's strong network of 400+ employer partners;
- Smaller class sizes for extra tutor support;
- Our teachers are industry experts;
- Many courses offer the flexibility to 'step on and off' to accommodate your changing circumstances.

## Our Partnerships:



"Studying at the Yeovil College University Centre has been an amazing experience. Having opportunities to work with companies both big (like creating an award winning film for Leonardo) or small (like filming a music video in Cornerstone Autos), has given me a sense of what it's like to work with these vastly different companies."

**Benjamin Gay, Graduate of YCUC**



## YEOVIL COLLEGE UNIVERSITY CENTRE QUALIFICATIONS:



- BA (Hons) Childhood Studies Care and Education
- FdA Childhood Studies, Care and Education



- BSc (Hons) Social Work
- HNC Healthcare Practice for England (Integrated Health and Social Care or Healthcare and Nursing Assistant Practice pathways)



HND Sport (Coaching and Physical Activity) two pathways:  
Football Club Coaching or Coaching and Physical Education



- BA (Hons) Business Management and Strategy
- HND Business



- HNC/D Mechanical Engineering
- HNC/D Manufacturing Engineering



HND International Travel & Tourism Management



HNC/D Computing



HNC/D Aeronautical Engineering



FdA Graphic Design



FdA Media



FdA Photography



HND Policing



PGCE (post-16)



# COURSE INDEX

## COURSES AVAILABLE AT YEOVIL COLLEGE

### A-LEVELS (29-38)

- Art & Design
- Biology
- Business
- Chemistry
- Computer Science
- Economics
- English Language
- English Literature
- Environmental Science
- Further Maths
- Geography
- History
- Law
- Maths
- Physics
- Photography
- Psychology
- Sociology
- Diploma in Criminology L3
- Diploma in Performing Arts L3
- Diploma in Sport L3
- Certificate in Maths (Core) L3

### VOCATIONAL COURSES (39-68)

#### Business (40-41)

- Business Administration
- Business
- T Level Transition Programme in Digital Business
- T Level Digital Business

#### Computing (42-43)

- Networking & Cyber Security
- Computing
- T Level Transition Programme in Computing
- T Level in Computing

#### Construction (44-45)

- Bricklaying (Trowel Occupations)

- Carpentry & Joinery (Wood Occupations)
- Construction and the Built Environment
- Electrical Installation (Building & Structures)
- Plumbing Studies
- Fire & Security

#### Creative Industries (46-47)

- Art & Design
- Creative Digital Media Production
- Graphic Design & Photography
- Foundation Diploma in Art & Design

#### Engineering (48-49)

- Craft Engineer
- Technical Engineer

#### Foundation Learning (50-51)

- Preparation for Life & Work
- Preparation for Adulthood
- Supported Internships
- Progression Pathways Vocational

#### Hair & Beauty (52-53)

- Introduction to Beauty
- Hairdressing & Beauty
- Hairdressing & Barbering
- Barbering
- Hairdressing
- Hair & Media Makeup
- Beauty Therapy
- Diploma in Theatrical, Special Effects & Hair & Media Makeup

#### Health, Social Care & Early Years (54-55)

- Introduction to Health & Early Years
- T Level Transition Programme in Early Years Education

- T Level Early Years Education
- Health & Social Care
- T Level Transition Programme in Health
- T Level Health
- T Level Healthcare Science

#### Hospitality & Catering (56-57)

- Introduction to Professional Cookery
- Introduction to employment in the Hospitality Industry
- Professional Cookery
- Advanced Professional Cookery
- Food & Beverage Service
- Hospitality Supervision and Leadership

#### Motor Vehicle (58-59)

- Light Vehicle Maintenance & Repair

#### Performing Arts (60-61)

- Performing Arts

#### Protective Services (62-63)

- Public Services
- Uniformed Services
- Uniformed Public Services
- HND Policing

#### Sports, Coaching & Fitness (64-65)

- Sport
- Instructing Exercise & Fitness
- Personal Training
- YTFC Elite Player Development Programme (EPDP)
- Sport & Exercise Sciences
- Strength & Conditioning
- Sports Coaching & PE
- Yeovil Town Football Club (YTFC) Coaching & Physical Activity

#### Travel & Tourism (66-67)

- Travel & Tourism

## APPRENTICESHIPS (69-74)

### Business & Professional Services

- Assistant Accountant & Professional Accounting/Taxation Technician
- Business Administration
- Customer Service - Practitioner & Specialist
- Team Leader/Supervisor
- Operations/Departmental Manager
- Marketing
- Retailer & Retail Team Leader
- Learning & Skills Teacher
- Learning Mentor
- Assessor/Coach

### Construction

- Bricklayer
- Carpentry & Joinery (Site & Architectural)
- Furniture Manufacturer
- Electrician (Installation & Maintenance)
- Fire Emergency & Security Systems Technicians
- Property Maintenance Operations
- Plumbing & Domestic Heating Technician

### Creative Industries

- Junior Content Producer
- Lean Manufacturing Operative
- Print Technician

### Engineering

- Engineering Technician - Machinist - Advanced Manufacturing Engineering
- Engineering Technician - Aerospace Manufacturing Fitter
- Composite Technician
- Engineering Technician - Mechatronics Maintenance Technician
- Metal Fabricator
- Engineering Technician - Product Design
- Engineering Technician - Technical Support
- Engineering Technician - Tool Technician

- General Welder (Arc Processes)
- Manufacturing Engineer (Degree)
- Aerospace Engineer (Degree)
- Engineering Manufacturing Technician (Level 4)

### Hair & Beauty

- Hair Professional (Barbering & Hairdressing Options)

### Health, Care & Early Years

- Children & Young People's Workforce
- Children, Young People & Families Practitioner, Including Residential Childcare
- Early Years Educator
- Adult Care & Lead Adult Care
- Health Assistant Practitioner
- Senior Healthcare Support worker
- Teaching Assistant
- Dental Nursing - Principles & Practice
- Lead Practitioner In Adult Care

### Hospitality

- Production Chef
- Commis Chef
- Hospitality Supervisor
- Hospitality Team Member

### IT

- Cyber Security Technologist
- Network Engineer
- Software Developer
- Infrastructure Technician

### Motor Vehicle

- Motor Vehicle Service & Maintenance Technician

### Sport

- Leisure Team Member
- Leisure Duty Manager
- Personal Trainer
- Community Sport & Health Officer
- Sport Teaching Assistant

- Community Activator Coach
- Travel Consultant

## T Levels (75-79)

- Digital Business
- Childcare
- Computing
- Health & Social Care
- Science

## ENGLISH AND MATHS (80-81)

- GCSE English
- GCSE Maths
- ESOL
- Functional Skills

## DEGREE LEVEL (82-83)

- BA (Hons) Business Management & Strategy
- BA (Hons) Childhood Studies, Care and Education
- BSc (Hons) Social work
- FdA Childhood Studies, Care and Education
- FdA Graphic Design
- FdA Media
- FdA Photography
- HNC Healthcare Practice for England (Integrated Health and Social Care or Healthcare and Nursing Assistant Practice pathways)
- HNC/D Aeronautical Engineering
- HNC/D Computing
- HNC/D Mechanical Engineering
- HNC/D Manufacturing Engineering
- HND Business
- HND International Travel & Tourism Management
- HND Policing
- HND Sport (Coaching and Physical Activity) two pathways: Football Club Coaching or Coaching and Physical Education
- PGCE (post-16)

# FINANCIAL INFORMATION

At Yeovil College we understand that finance can play a big part of the decision-making process and we do not want the costs associated with studying to prevent you reaching your career potential.

## Financial Support

If you're under 19 years old and studying at Yeovil College, then your course is FREE. There may also be some additional financial assistance available to you, for example our 16-19 bursary fund. Yeovil College has funds to aid students facing financial obstacles and to support students with the general cost of studying such as books, travel, equipment and more. Even if you were studying at a different college before coming to Yeovil, you may still be eligible for this funding.

## Advanced Learner Loan

If you're aged 19 or above and interested in studying a Level 3 qualification or higher, then you may be eligible for help with your fees via the Advanced Learner Loan. Application is easy and it does not take your household income into account, nor does it involve a credit check. Repayment of the loan only starts when you are earning more than £25,750\* per year.

## Am I eligible for an Advanced Learner Loan?

Yes if you are aged 19+ at the start of your course; you have been a resident in the UK for three years prior to the start of your course; and are studying with a Skills Funding Agency provider, such as Yeovil College.

## Advanced Learner Loan Bursary Fund

The Advanced Learner Loan Bursary Fund supports students who have an approved Advanced Learner Loan in place to cover the fees for their course and have a household income of £30,000 - £36,000\*. It can be used for childcare, travelling costs, additional learning support and hardship.

## 16-19 Bursary Funds

A discretionary bursary is available for students with a household income below £30,000\* per year. A vulnerable group bursary is available for students who are:

- in care or care leavers;
- receiving Income Support;
- receiving Universal Credit or in receipt of Employment Support Allowance and Disability Living Allowance or Personal Independence Payment.

## Resource fee

A fee is applicable upon enrolment for all full-time study programmes. This payment supports the costs of resources such as events and activities, uniforms, PPE, equipment, an email account and storage, external speakers and print credit. In addition, specific curriculum areas may add a course fee to enable you to practice safely and professionally and you will be advised during the enrolment process.

## Free School Meals

All students aged between 16-18 whose families are on low incomes or are in receipt of specific benefits will be entitled to free school meals at Yeovil College. Please contact our Student and Customer Services team for information and application.

## Bring your own Devices

We are now a fully wifi enabled and digital campus, which means classroom delivery has significantly changed. All Yeovil College students are expected to bring their own devices into the classroom which will allow for collaborative learning, more flexibility, more creative learning opportunities and improved communication.

\*Correct at time of print and may be subject to change.

# PERSONAL SUPPORT

We are so passionate about helping you achieve your dreams that we have dedicated a whole team to providing responsive and flexible additional learning support. This is just a few of the things the team may be able to support you with.

## **Specialist Individual Support Sessions**

Timetabled alongside your course, sessions can be focused on assignment work, time management and practicing strategies for examinations.

## **Counselling Services**

At times life doesn't always run smoothly, things may happen outside of college which may impact upon your studies. You will have access to a free and confidential counselling and Student Support team who can also make referrals to outside agencies.

## **Personal Health**

We provide weekly health clinics to all students at Yeovil College, where you will be able to seek support in all matters surrounding sexual health, as well as signing up for the C-Card scheme.

## **Small Group Workshops**

These small workshops give you the opportunity to develop skills to develop confidence and communication skills.

## **Equality and Diversity**

Yeovil College is committed to actively recognising and promoting equality and diversity in our college community. We take our responsibility to safeguard the welfare of all our learners very seriously through the management of appropriate policies, procedures and practices. We wish to provide a working and learning environment that acknowledges the richness of diversity, as well as valuing and managing each individual's equality of opportunity within the College. We oppose all forms of discrimination or victimisation on any grounds such as age, race, disability, pregnancy or maternity, religion or belief, gender, sexual orientation, gender re-assignment or marital status.

---

# DIRECT BUS TRAVEL FOR YOU

We recognise the travel challenges in and around the South Somerset and Dorset area and we understand that some students find it extremely difficult to reach quality post 16 education institutions. We are committed to addressing this issue and in doing so providing our students and future students with the education that they deserve, which is why we have invested in providing a direct bus fleet.

If you are joining Yeovil College from September 2021 and live in or around the Langport, Shaftesbury, Wincanton, Castle Cary or Gillingham areas, then you will have the opportunity to purchase a ticket on one of our direct buses. Our bus fleet are more cost effective than a County bus ticket and in some cases are free, when supported by our travel bursary. Contact our Customer Services team for the latest information on prices and making your application to reserve a seat. You can also apply for your space on one of our direct buses via our website, [www.yeovil.ac.uk](http://www.yeovil.ac.uk).

## **Help with Bus fees**

Outside of our direct bus service, there are a huge number of county buses travelling to and from Yeovil College. Students who buy the Country ticket may also be eligible to claim for the cost of their ticket through our Travel Bursary Scheme. Please contact our student and Customer Services team for more information.



# CAMPUS MAP



- |   |  |
|---|--|
| 1 Kingston Building (A)                     | 10 Ashdown Building (G)                |
| 2 Main Hall & Food Outlets                  | 11 Facilities (Goods In)               |
| 3 Bridge Block (B)                          | 12 Centre for Advanced Engineering (I) |
| 4 Main Reception & Learning Resource Centre | 13 Leonardo Building (E)               |
| 5 Yeovil College Nursery                    | 14 Sports Field                        |
| 6 Bradford Construction Centre (K)          | 15 Screwfix Trade Skills Centre (T)    |
| 7 Exam Hut                                  | 16 Fitness Centre                      |
| 8 Sports Field                              | 17 Sports Centre (F)                   |
| 9 Exam Hut                                  | 18 Training Kitchens                   |
|   | 19 Kingston Green                      |

## INFORMATION EVENINGS

Register now to secure your place at our next Open House Information Event at [www.yeovil.ac.uk/events](http://www.yeovil.ac.uk/events)

<b>TUES</b> 6 OCT <small>Virtual</small>	<b>OPEN HOUSE MONTH</b> 7 OCT - NOV 4 <small>Virtual</small>	<b>TUES</b> 19 JAN
<b>TUES</b> 23 FEB <small>Apprenticeship Job Fair</small>	<b>WED</b> 24 MAR	<b>MON</b> 14 JUN

Title:	Date of Birth:	Telephone:						
<input type="text"/>	<input type="text" value="Day / Month / Year"/>	<input type="text"/>						
Surname:	Gender:	Mobile Number:						
<input type="text"/>	<input type="text"/>	<input type="text"/>						
First Name:	National Insurance (NI) Number:	Email:						
<input type="text"/>	<input type="text"/>	<input type="text"/>						
Previous Surname (if applicable):	Home Address:							
<input type="text"/>	<table border="0"> <tr> <td>House No/Name:</td> <td>Street:</td> </tr> <tr> <td>Town:</td> <td></td> </tr> <tr> <td>County:</td> <td>Postcode:</td> </tr> </table>		House No/Name:	Street:	Town:		County:	Postcode:
House No/Name:	Street:							
Town:								
County:	Postcode:							
Legal First Name (if different):	<input type="text"/>							

Please indicate the type of course that you wish to apply for:

Full-time ☐ Part-time ☐ Apprenticeship ☐ Night School ☐ University Centre ☐

Please indicate the course (s) that you wish to apply for:

For Apprenticeships, please confirm the name of your employer (if you have one):

Please state your most recent school or college:

Date from:

Date to:

How did you hear about Yeovil College?

Career Service ☐ School ☐ Radio Advert ☐ Yeovil College ☐ Information Event ☐  
 Friends/Family ☐ Social Media ☐ Other (Please Detail)

Please select a Sports Academy as part of your study programme (Athletics, Badminton, Basketball, Cricket, Cross Country, Cycling, Football, Golf, Gymnastics, Handball, Hockey, Martial Arts, Netball, Other Specialist Sport, Rounders, Rugby, Swimming, Table Tennis, Tennis, Triathlon, Weight Lifting).

Parent/Guardian Information:

Parent's First Name:

Parent's Surname:

Parent's Phone Number:

Parent's Email Address:

Parent's Mobile Number:

Further Information:

Yeovil College welcomes the Disability Discrimination Act (part 4) and we want to help you get the very best experience from your course. We will offer opportunities prior to enrolment for you to disclose and discuss (in private) your individual support needs. (If you fail to disclose Information at this stage it may delay provision or relevant on-course support).

Do you have a Medical Condition, Learning Difficulty or Disability that may affect your study? If so, what do you require extra help with?

Learning Difficulty ☐ Medical Condition ☐



Nationality

Have you continually been a resident in the UK for the last three years?

Yes ☐ No ☐

Is English your first language?

Yes ☐ No ☐

Do you have any criminal convictions or prosecutions pending?

Yes ☐ No ☐

#### What Next?

Once you have completed your application form, please post using the Freepost address at the bottom of the page, return through your school, or drop into the main reception at Yeovil College, Mudford Road campus. If you would like further information on courses, progression opportunities, or financial assistance and bursaries please contact our Student and Customer Service Team on 01935 423921.

#### Course Fees:

May vary depending on your individual circumstances, prior attainment and Government Funding, for any queries or advice on loans, please call our Student and Customer Service Team on 01935 423921 or [enrol@yeovil.ac.uk](mailto:enrol@yeovil.ac.uk), or visit [www.yeovil.ac.uk](http://www.yeovil.ac.uk) for more information. You can also message us through our 'contact us' section via our website.

\* The College reserves the right to withhold certification if any fees or charges remain outstanding at the end of the course. Yeovil College operates a no refund policy on all courses once you have enrolled. Sometimes, if minimum numbers are not reached, we may need to cancel a course. In this situation you will be offered a transfer to another date/time, or a full refund.

How we use your personal information: This privacy notice is issued by the Education and Skills Funding Agency (ESFA), on behalf of the Secretary of State for the Department of Education (DfE). It is to inform learners how their personal information will be used by the DfE, the ESFA (an executive agency of the DfE) and any successor bodies to these organisations. For the purposes of the relevant Data Protection Legislation, the DfE is the data controller for personal data processed by the ESFA. Your personal information is used by the DfE to exercise its functions and to meet its statutory responsibilities, including under the Apprenticeships, Skills, Children and Learning Act 2009 and to create and maintain a unique learner number (ULN) and a personal learning record (PLR). Your information will be securely destroyed after it is no longer required for these purposes.

Your information may be shared with third parties for education, training, employment and well-being related purposes, including for research. This will only take place where the law allows it and the sharing is in compliance with the Data Protection Legislation.

The English European Social Fund (ESF) Managing Authority (or agents acting on its behalf) may contact you in order for them to carry out research and evaluation to inform the effectiveness of training.

You can agree to be contacted for other purposes by ticking any of the following boxes if you do not wish to be contacted:

☐ About courses or learning opportunities. ☐ For surveys and research. ☐ By post. ☐ By phone. ☐ By email.

Further information about use of and access to your personal data, details of organisations with whom we regularly share data, information about how long we retain your data, and how to change your consent to being contacted, please visit:

<https://www.gov.uk/government/publications/esfa-privacy-notice>

#### Declaration

Please read the declaration below and check the box to confirm that you have read the declaration before proceeding.

I declare that to the best of my knowledge the information I have given is a true and correct record and I give my consent for Yeovil College to process this information in accordance with the General Data Protection Regulations.

If you are between the ages of 15 and 18, the information that you provide may be shared with your parents or carers, current school and the careers service, during and after the application process. Some of the information you supply will be used by the Education and Skills Funding Agency to fulfil its statutory functions and to issue / verify your unique learner number (ULN) and update or check your personal learning record (PLR).

The information you have provided on this form will be used by Yeovil College to support and guide you through the application process. All information gathered about prospective students, parents/guardians are to be used only for the processes of application and enrolment purposes.

If you would like to receive additional marketing information or details about future events that are not relevant to your current enrolment or application, please let us know how you'd like to receive this:

☐ SMS ☐ Email ☐ Post ☐ Phone ☐ Messenger

#### Privacy Notice – Students

Further information about what College data is collected, how we use your personal data and who we share your personal data with is available at the webpage below: <http://www.yeovil.ac.uk/Footer/Privacy.html>

☐ I confirm that I have read the declaration above

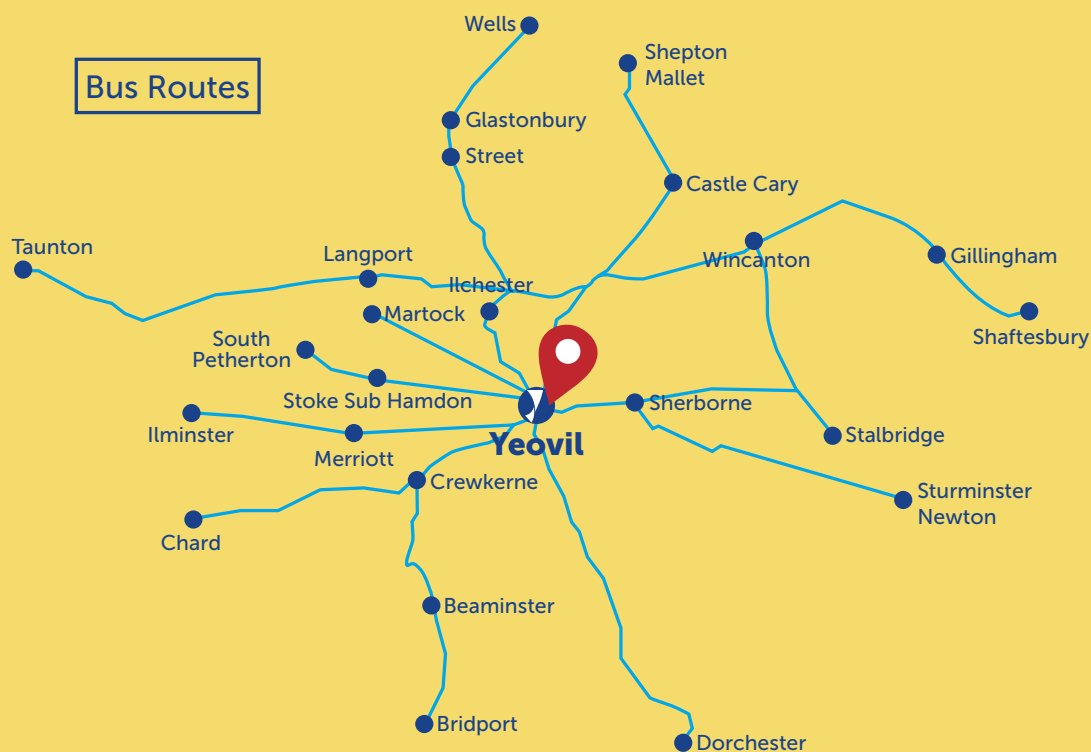
Learner Signature:

Parent/Guardian Signature:  
(if learner is under 18)

Date:



# WHERE TO FIND US



Yeovil College has made every effort to ensure that the details in this prospectus are correct at time of going to print. We may introduce new courses during the year; please check our website [www.yeovil.ac.uk](http://www.yeovil.ac.uk) for the most up-to-date information. We reserve the right to cancel any courses where, in our view, there is insufficient demand, or where unforeseen circumstances make it impossible to run. Information may be changed after publication as a result of changes made by awarding bodies or changes to government funding rules/eligibility. Yeovil College reserves the right to withhold certification if fees are not paid in full. If you would like this publication in large print or an alternative format, please contact our Student and Customer Services team. Version one of the 2021/22 Full-Time Course Guide was published in August 2020.



Yeovil College, Mudford Road,  
Yeovil, Somerset, BA21 4DR

01935 423921  
enrol@yeovil.ac.uk  
yeovil.ac.uk

